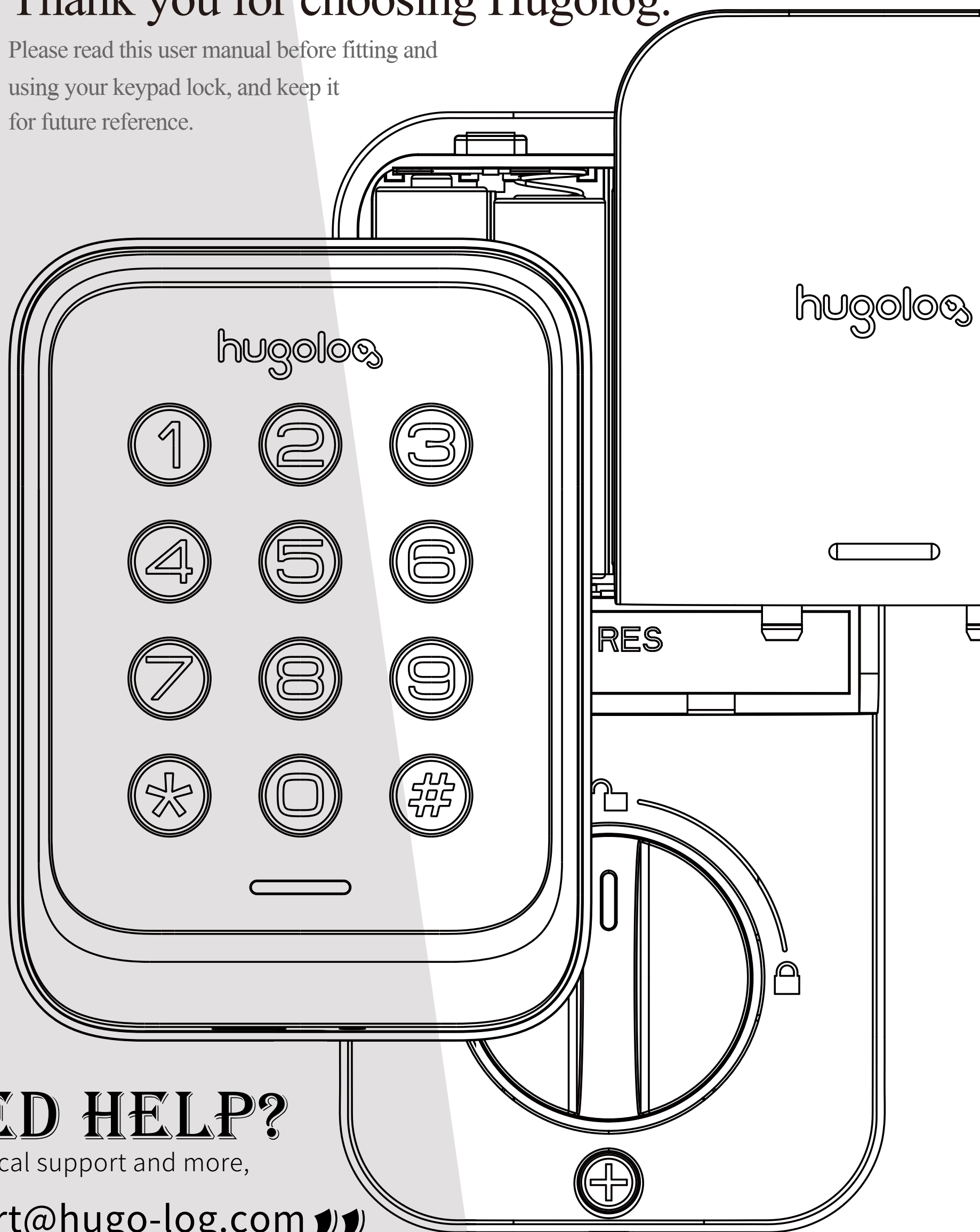




Thank you for choosing Hugolog.

Please read this user manual before fitting and using your keypad lock, and keep it for future reference.



NEED HELP?

For technical support and more,
please email:

support@hugo-log.com



CONTENTS

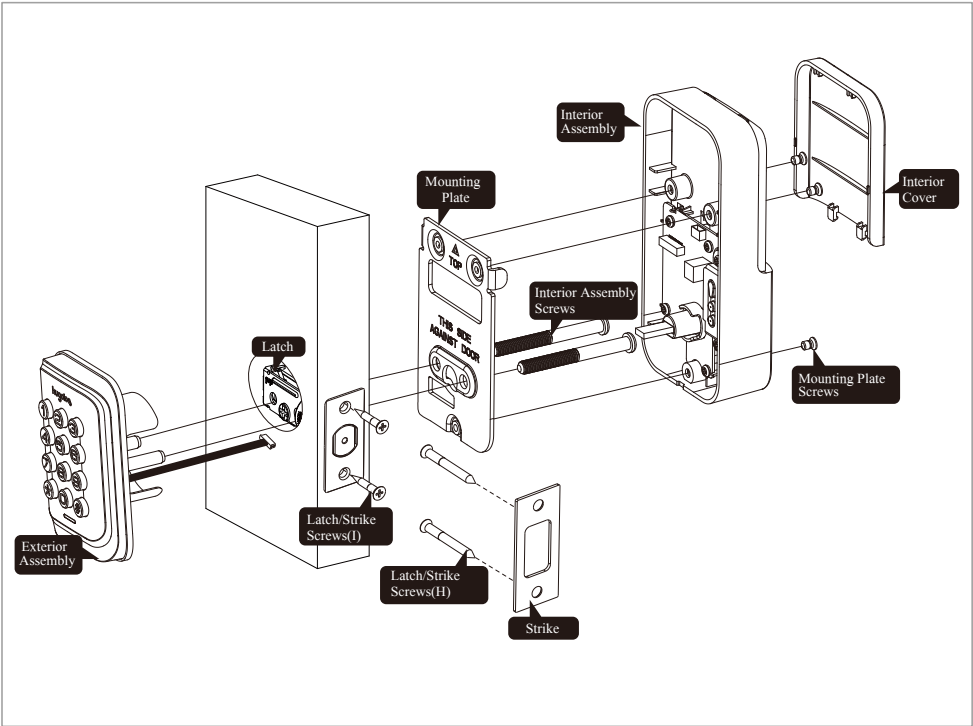
< Installation Guide

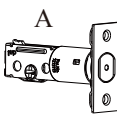


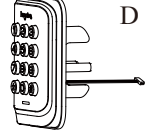
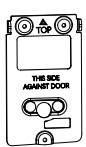
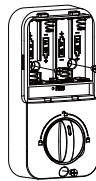

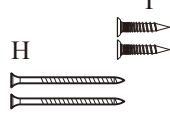
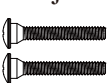

Prepare the door and check dimensions	- - -	Page 1
Install the latch and strike	- - -	Page 1
Install exterior assembly	- - -	Page 2
Install interior assembly	- - -	Page 2
Detect left/ right hand door installation	- - -	Page 2

< Programming Instructions

Information & Safety Warnings	- - -	Page 3
Parts Illustrations	- - -	Page 3
Definitions	- - -	Page 4
How To Use	- - -	Page 4
Quick Set Up	- - -	Page 5
Factory Default Settings	- - -	Page 6
Restore To Factory Default Settings	- - -	Page 6
Troubleshooting	- - -	Page 6

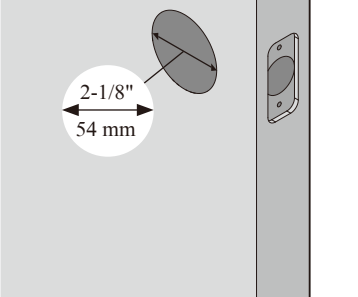
Installation Guide

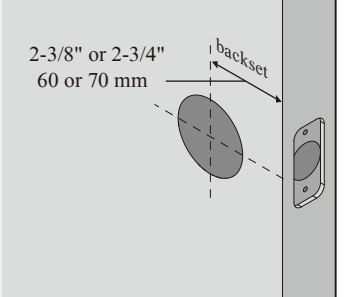


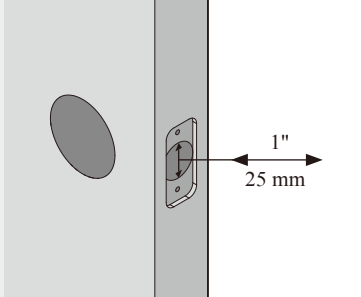
Parts List			
Latch 	Drive-In Collar 	Strike 	Exterior Assembly 
Mounting Plate 	Interior Assembly 	Interior Cover 	Latch and Strike Screws 
Interior Assembly Screws 	Mounting Plate Screws 		

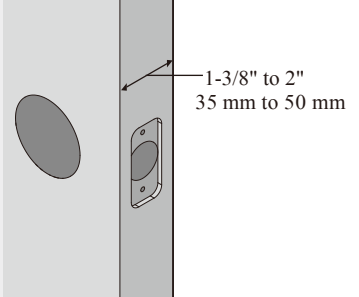
1 Prepare the door and check dimensions

- A** Measure to confirm that the hole in the door is 2-1/8" (54 mm) .


- B** Measure to confirm that the backset is either 2-3/8" or 2-3/4" (60 or 70 mm) .

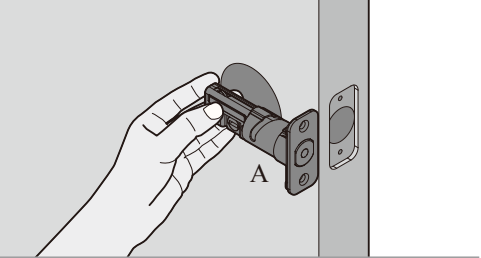

- C** Measure to confirm that the the hole in the door edge is 1" (25 mm) .


- D** Measure to confirm that the door is 1-3/8" to 2" (35 mm or 50 mm) thick .



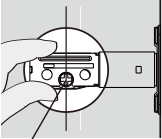
2 Install the latch and strike

- A** Hold the latch in front of the door hole, with the latch face flush against the door edge.



Is the slotted hole centered in the door hole?

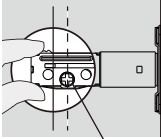
YES



Slotted hole is centered.

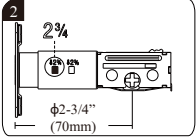
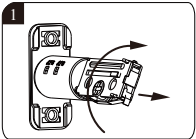
No adjustment is required. Proceed to next step.

NO



Slotted hole is NOT centered.

Rotate and pull the latch as shown to extend latch.



B Is the door edge chiseled?

YES



Install latch in door with supplied screws.

NO



Use a flathead screwdriver to remove Rectangular face from latch and install drive-in collar.



Install latch in door with wood block and hammer.

C Use a screwdriver to test if deadbolt works smoothy.



D Install strike on the door frame.

IMPORTANT: Make sure hole in door frame is drilled a minimum of 1" (25 mm) deep.

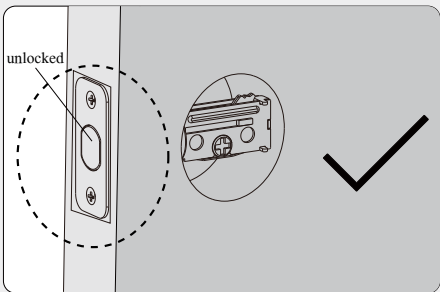
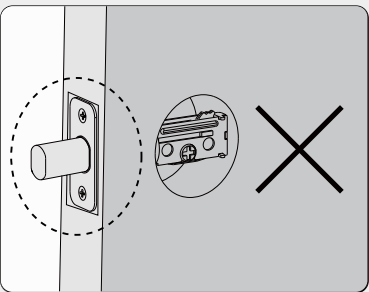


3

Install exterior assembly

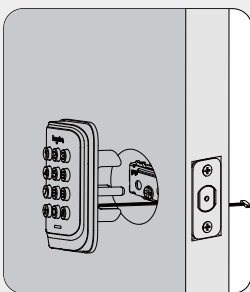
A

⚠IMPORTANT: Before installation, make sure the latch is fully retracted (in the unlocked position) .



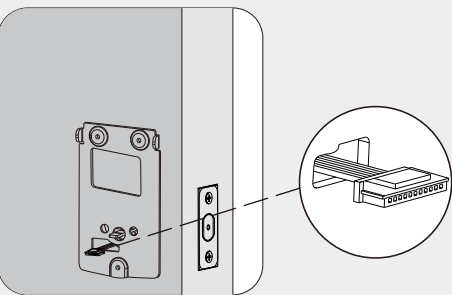
B

Route the cable below the latch.



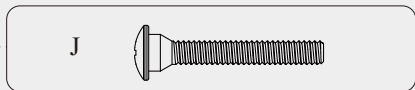
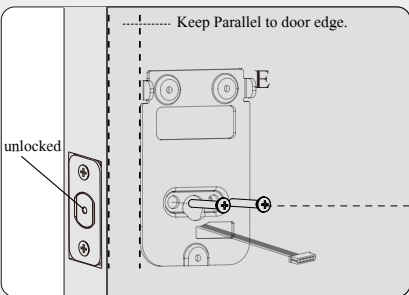
C

Send the cable through the bottom horizontal slot in the mounting plate.



D

Secure the mounting plate with the supplied screws.



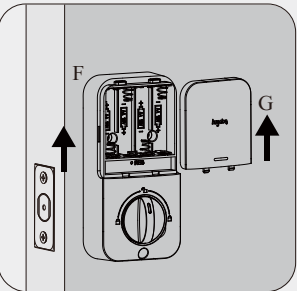
4

Install interior assembly

⚠IMPORTANT: Do not load batteries until lock is completely installed.

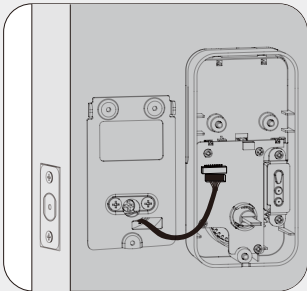
A

Remove the battery cover.



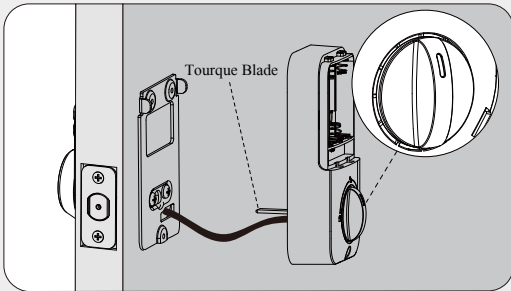
A

Connect the cable and ensure tight cable connection.



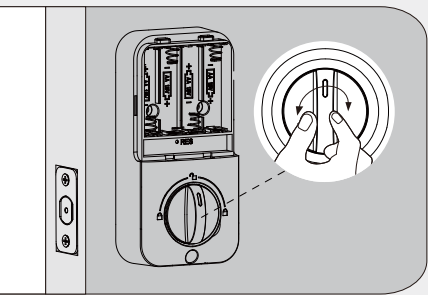
B

Rotate the turnpiece in vertical position and make sure the latch is still fully retracted (in the unlocked position). Insert the torque blade through the center hole in the mounting plate.



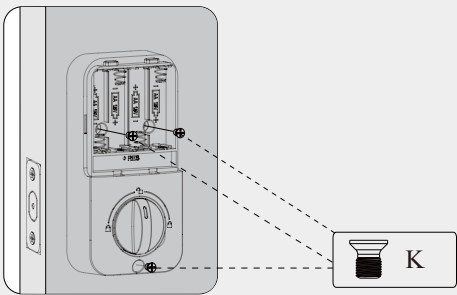
C

Test the turnpiece for smooth rotation. If turnpiece doesn't rotate, repeat step 4C, making sure the turnpiece in vertical position.



D

Secure the interior assembly with the supplied screws.



5

Detect left/ right hand door installation

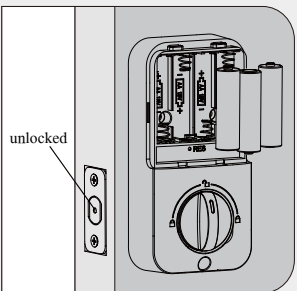
Reset the lock to teach the lock the orientation of the door.

⚠IMPORTANT: This step is required and crucial for the lock to operate properly.

A

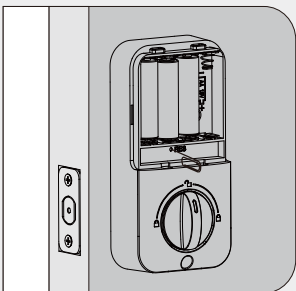
While the door is OPEN and UNLOCK, load 3 AA batteries into the interior assembly.

⚠IMPORTANT: For best results, use new, non-rechargeable Alkaline batteries only.



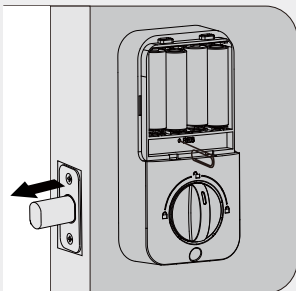
B

Press and hold the Reset button on the interior assembly using a pen or a paper clip.



C

Load the last battery and keep holding the reset button for 3 seconds, until you hear the sound of "beep". The latch bolt will extend to learn the orientation of the door.



Programming Instructions

Information & Safety Warnings

- Protect your User Codes and Master Code.
- Restrict access to your lock’s interior assembly and routinely check your settings to ensure they have not been altered without your knowledge.
- This lockset is designed to provide the highest standard of product quality and performance. Care should be taken to ensure a long-lasting finish. When cleaning is required use a soft, damp cloth. Using lacquer thinner, caustic soaps, abrasive cleaners or polishes could damage the coating and result in tarnishing.

⚠ **IMPORTANT: Do not load batteries until lock is completely installed.**

1. Master Code(4 to 10 digits) : The default Master Code is 12345678. It is required that you change it to a code of your own before programming.
2. User Code(4 to 10 digits) : A total of 20 User Codes (and one temporary one-time User Code) may be programmed.
3. Both master and user pin codes don not support the following combination of numbers.

A.

1	2	3	4	5	6	7	8	9
---	---	---	---	---	---	---	---	---

B.

9	8	7	6	5	4	3	2	1
---	---	---	---	---	---	---	---	---

C.

2	2	2	2	2	2	2	2	2
---	---	---	---	---	---	---	---	---

D. If

5	6	8	3
---	---	---	---

✓

Then

5	6	8	3	9	1
---	---	---	---	---	---

✗

Contain existing code sequence

and

9	1	5	6	8	3
---	---	---	---	---	---

✗

✗

Forward number sequence

✗

Backward number sequence

✗

Repeat number sequence

Parts Illustrations

Item	Specifications	Remarks
Battery (Use new, non-rechargeable Alkaline batteries only.)	AA alkaline battery x4 (Operation voltage: 4.6~6.0V)	Last up to one year (10 times open/close per day)

Exterior Assembly

hugobos

1 2 3

4 5 6

7 8 9

* 0

Light Indicator

Reboot Button

Micro USB Power Port

Keypad

Interior Assembly

hugobos

Battery Cover

Reset Button

Thumb Turn

RES

⚠ The default Master Code is 12345678. It is required that you change it to a code of your own before programming.

Definitions

Master Code

Required for programming and feature settings. Master code can be used to unlock the door under vacation mode. The default master code needs to be changed before programming.
Property owner/ manager should keep this information confidential.

Auto Lock

Automatically locks the deadbolt 30 seconds after unlocking. This feature is off by default. You can set the Auto Lock time delay between 10 and 99 seconds.

Emergency Power Port

Emergency USB Port can be used when battery is completely dead. Supply power by connecting an external power bank to the micro-USB port.

Wrong Entry Limit

After 10 unsuccessful attempts at entering a valid PIN code, the unit will shut down for 3 minuets.

Silent Mode

The beep sounds when pressing keypad can be muted. But you will still hear low battery and system alerts.

Vacation Mode

This is a security feature for you when you are leaving your home for vacation or long trip. Enabling vacation mode will restrict all user codes until master code is entered on keypad. If the lock is unlocked by thumb turn, the lock will sound an alarm.

One Time User Code

This code can only be used once and is automatically deleted when used.

Unlock with Fake code

User can prevent pin code exposure from strangers by entering random digits before or after pin code.



How To Use

Unlock the door

1.Unlock the door from outside



2.Unlock the door from inside



Rotate the thumb turn to Unlock position.

Lock the door

1. Lock the door from outside

Auto Re-lock Mode

In Auto re-lock mode, the bolt will extend out automatically in 30 seconds after unlocking

Manual Mode

Press any key on keypad for 2 seconds



2. Lock the door from inside

Auto Re-lock Mode

In Auto re-lock mode, the device will be locked automatically.

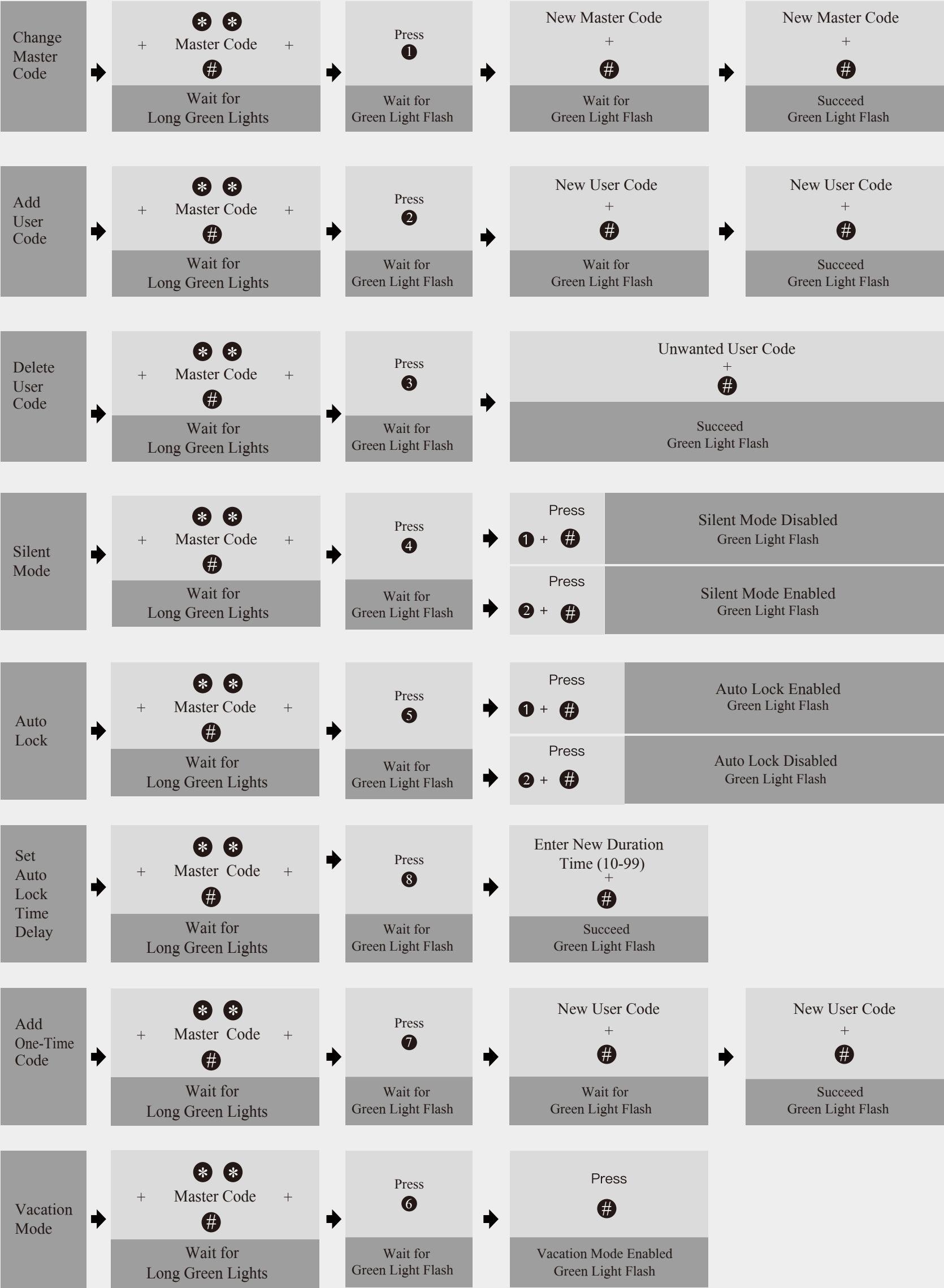
Manual Mode

Rotate the thumb turn to Lock position.



Quick Set Up

⚠️**IMPORTANT:** The default Master Code is 12345678. It is required that you change it to a code of your own before programming.



Notes:
When setting is unsuccessful, the indicator light will flash red.

Factory Default Settings

Settings	Factory Defaut
Master Code	12345678
Auto Lock	Disabled
Silent Mode	Disabled
Wrong Code Entry Limit	10 times
Shutdown Time	3 mins
Vacation Mode	Disabled

Restore To Factory Default Settings

This procedure will delete all User Codes associated with the lock.

1. Keep the door open and unlock.
2. Press and hold the Reset button, at the same time take out one battery and then place it back.
3. Keep holding the Reset button for 3 seconds, until you hear the sound of beep.

Troubleshooting

The turnpiece cannot rotate or operate the lock.

Remove and re-install the lock, making sure that the turnpiece is in vertical position.

The lock cannot be locked or unlocked by the keypad.

Make sure that the codes are not disabled. If needed, restore the lock’s default settings.

The keypad doesn’t respond when touched (no lights are visible and no beeping is heard) .

Make sure the cables are properly connected, and make sure the batteries are new and installed correctly.

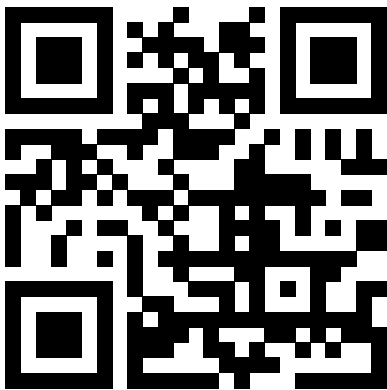
After the installation of the batteries, there is no response when you press any button and no beeps are heard.

Check the cable connection and the polarity of the batteries. Also make sure the batteries are not dead.

I forgot my Master Codes.

Perform a reset in order to erase all passcodes. Once the reset is complete, all passcodes will be erased and the Master code will return to the default value (12345678) .

* If none of the above resolves your issue, check out our updated user manual by scanning the code below. You could also contact Hugolog customer service at support@hugo-log.com.



Scan to access installation video and updated manual.

NEED HELP?
www.hugo-log.com
support@hugo-log.com