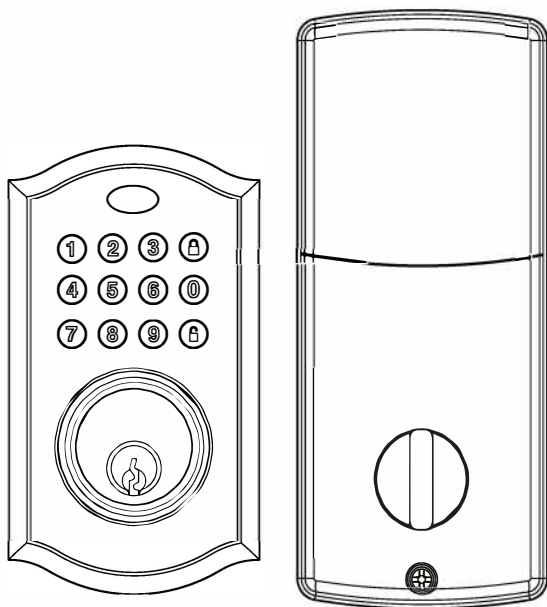




## Installation & Operation Guide

### Keypad Electronic Lock





## INSTALLATION INSTRUCTIONS

Package Contents / Tools Required .....	Page 1
Prepare Door and Jamb .....	Page 2
Adjusting Deadbolt Latch Set .....	Page 3
Installing Deadbolt Latch Set .....	Page 4
Installing Interior Assembly .....	Page 5
Installing Exterior Assembly .....	Page 6
Installing Interior Assembly (Cont.).....	Page 7-8

## OPERATION INSTRUCTIONS

Exterior Assembly Overview .....	Page 9
Locking / Unlocking / User Code Management .....	Page 10
Auto-lockSetting / Sound Off and On .....	Page 11
Reset / Warning .....	Page 12
Troubleshooting ... ..	Page 13
Template .....	Page 14

## **Things you must know during installation & Programming**

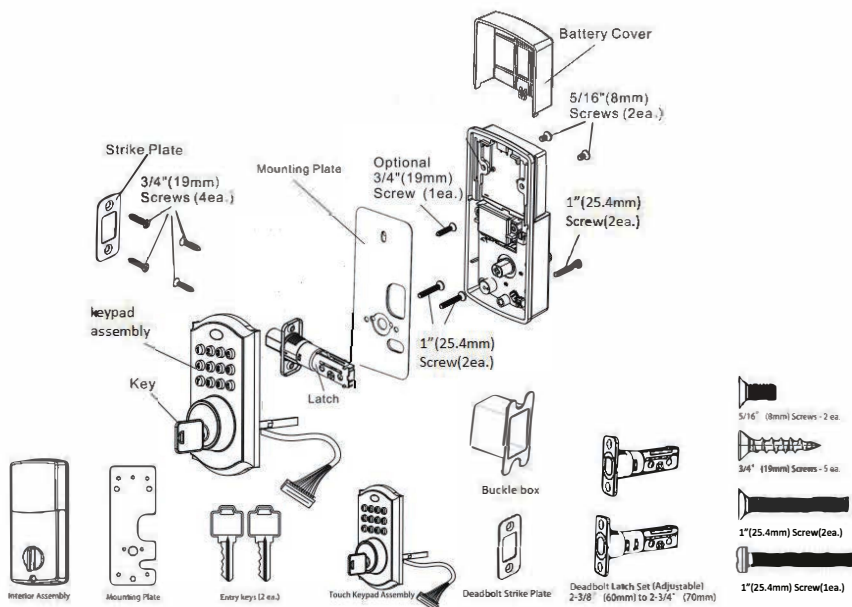
### **Installation:**

1. Please keep the deadbolt latch retracted when installing.
2. When you install the exterior keypad, you need to position the tailpiece on the back HORIZONTALLY. If the tailpiece is positioned incorrectly, the interior knob will not turn.
3. Please be aware that the installation process is different for LEFT-HINGED DOORS and RIGHT-HINGED DOORS. Incorrect switch setting could cause the lock works in the opposite way. You can refer to the page 4 or our video and pictures on the product page to identify your door handing.
  - ❖ If your door is left-hinged, you would need to ensure the entry switch is set to LEFT at the interior assembly and the interior knob is positioned HORIZONTALLY.
  - ❖ If your door is right-hinged, you would need to ensure the entry switch is set to RIGHT at the interior assembly and the interior knob to is positioned VERTICALLY.

### **Programming:**

- ❖ Please ensure that the door is open and the lock is set to the UNLOCK position before any programming setting.

# INSTALLATION INSTRUCTIONS



## Tools Required

Tools Required for Installation  
on Pre-drilled Doors:

- Phillips Screwdriver

Tools Required for Installation  
on Doors That Require Drilling:

- Drill
- Tape Measure
- Pencil
- 2-1/8\" (54mm) Drill Hole Saw
- 1\" (25mm) Drill
- 1/16\" (2mm) Drill
- Chisel
- Hammer
- Phillips Screwdriver



## PREPARE DOOR AND JAMB



**NOTE:** For installation on doors with pre-drilled holes skip to page 4.

### 1. TEMPLATE

- Cut out template printed on page 14 of this Manual (Figure 1a).
- Fold template and place on door 36" (915mm) from the ground as marked (Figure 1b).



Figure 1a



Figure 1b

### 2. MARK THE DOOR FOR DRILLING

- Mark center hole on door edge through guidance on template for 1" (25mm) latch bolt (Figure 2a).
- Mark center hole on door face through guidance on template for 2-3/8" (60mm) or 2-3/4" (70mm) (Figure 2b) backset.



Figure 2a



Figure 2b

### 3. DRILL AND CHISEL DOOR

- Drill 2-1/8" (54mm) hole through door panel as marked for lock set (Figure 3a).
- Drill** 1" (25mm) hole in center of door edge for Deadbolt Latch Assembly (Figure 3b).
- Insert Deadbolt Latch Assembly in hole keeping it parallel to face of door. Mark outline and remove latch (Figure 3c).
- Chisel 5/32" (4mm) deep or until latch face is flush with door edge (Figure 3d).



Figure 3a



Figure 3b



Figure 3c

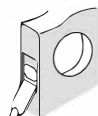


Figure 3d



**NOTE:** For Drive in Latch, drill hole size indicated on template and press until it is flush with door edge.

### 4. MARK AND DRILL DOOR JAMB

- Mark center hole on edge of jamb even with the center of the Latch Bolt on door edge. (Figure 4a).
- Drill 1" (25mm) hole 1-3/16" (30mm) deep in door jamb on center mark (Figure 4b).
- Outline outside edges of Strike Plate (Figure 4c).
- Chisel 5/32" (4mm) deep for Strike Plate or until it is flushed (Figure 4d).
- Install Strike Plate using two 3/4" (19mm) screws provided (Figure 4e).



Figure 4a



Figure 4b

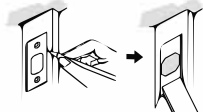


Figure 4c

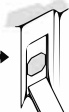


Figure 4d

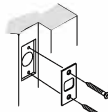


Figure 4e

## ADJUSTABLE DEADBOLT LATCH SET

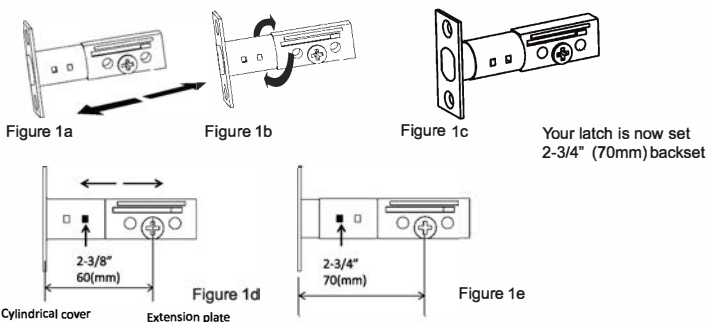


**NOTE:** Deadbolt Latch Set is shipped with the backset set at 2-3/8" (60mm) Measure the backset (backset is distance between edge of the door and the center of Lock).

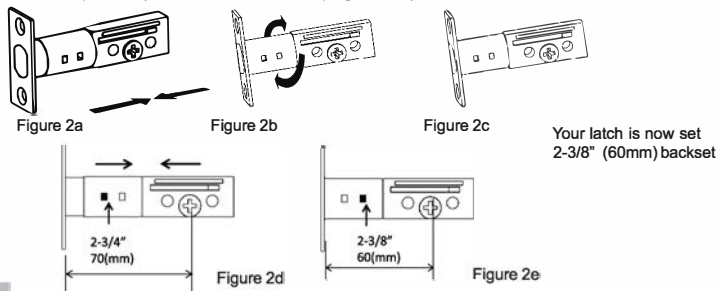
1. TO CONVERT FROM 2-3/8" (60mm) BACKSET TO 2-3/4" (70mm) BACKSET
  - a. Hold latch with numbers facing forward and thumb pressing on the bolt (Figure 1a).
  - b. Rotate the cylinder cover clockwise (Figure 1b).
  - c. Pull and twist the extension plate all the way out (Figure 1c).
  - d. Rotate the cylinder cover counter clockwise so that the marking aligns with the 2-3/4" (70mm) position indicator (Figure 1d).



**NOTE:** Do not extend Cylindrical Cover past 2-3/4" (70mm)



2. TO CONVERT FROM 2-3/4" (70mm) BACKSET TO 2-3/8" (60mm) BACKSET
  - a. Hold latch with numbers facing forward and thumb pressing on the bolt (Figure 2a).
  - b. Rotate the cylinder cover clockwise (Figure 2b).
  - c. Push and twist the extension plate all the way in (Figure 2c).
  - d. Rotate the cylinder cover counter clockwise so that the marking aligns with the 2-3/8" (60mm) position indicator (Figure 2d).



## INSTALLING DEADBOLT LATCH SET

### 3. INSTALLING THE DEADBOLT LATCH SET (need phillips head screwdriver)

- a. Insert Deadbolt Latch Set into door edge hole with the word "UP" and the arrow on the extension plate facing UP. Cross shaped spindle connector will be at the bottom of the Deadbolt Latch Set (Figure 3a).
- b. Make sure the face plate sits flush with the door. Do not force the latch into the mortise flush. Chisel out excess material if necessary for a flush fit.
- c. Using two 3/4" (19mm). screws provided, screw the latch into the door with a hand held screwdriver. DO NOT OVERTIGHTEN.

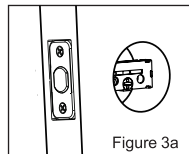
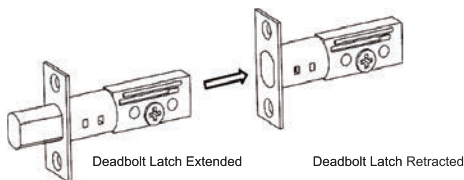


Figure 3a



**NOTE:** Deadbolt Latch must be Retracted when installing



### 4. IDENTIFYING YOUR DOOR HANDING

Stand outside of the door.

- a. If the hinges are on the left, your door is Left Handed (Figure 4a).
- b. If the hinges are on the right, your door is Right Handed (Figure 4b).

#### OUT SWING DOOR

Left Handed Door  
Hinges are on the left side

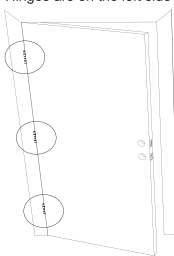


Figure 4a

Right Handed Door  
Hinges are on the right side

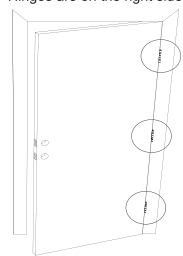


Figure 4b



**NOTE:** You are standing outside the door

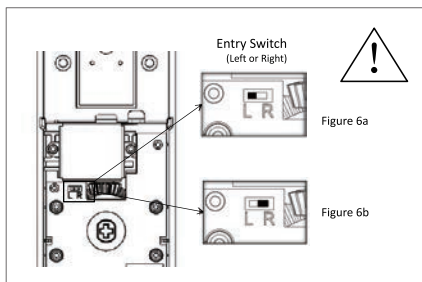
## INSTALLING INTERIOR ASSEMBLY

### 5. UNPACK THE INTERIOR ASSEMBLY

- Remove the battery cover by sliding the cover upward.
- Locate the screws holding the Mounting Plate to the Interior Assembly. Remove the screws to release the Mounting Plate from the Interior Assembly.

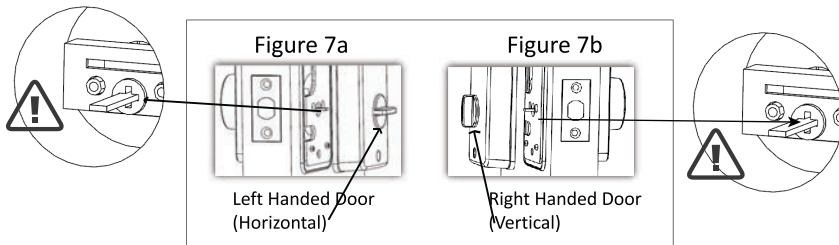
### 6. SET THE ENTRY SWITCH FOR LEFT OR RIGHT HANDED DOOR

- Gently move the switch to "L" for Left Handed Door (Figure 6a).
- Gently move the Switch to "R" for Right Handed Door (Figure 6b).

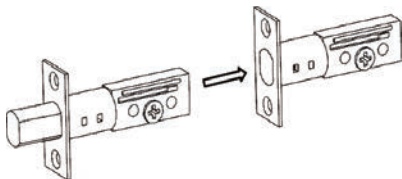


### 7. SET THE INTERIOR KNOB POSITION FOR LEFT OR RIGHT HAND HINGED DOORS

- The interior knob goes in the Horizontal position for Left Handed Doors. (Figure 7a).
- The interior knob goes in the Vertical position for Right Handed Doors. (Figure 7b).



**NOTE:** Make sure deadbolt Latch is retracted



## INSTALLING EXTERIOR ASSEMBLY

### 8. INSTALLING THE EXTERIOR ASSEMBLY

Work with the door open for easy access.

- Unpack the Exterior Assembly. Use carefully to not scratch the circuit board during handling and installation.
- Check if the Rubber Gasket is properly seated on the Exterior Assembly (Figure 8a-b).
- Insert the Exterior Assembly onto the door with the tailpiece going through the Deadbolt Latch Set cross shaped spindle connector in the HORIZONTAL POSITION. Route the Control Wire through the door under the Deadbolt Latch Set (Figure 8c).

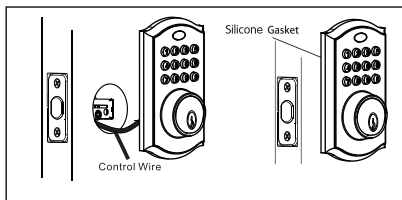


Figure 8a-b

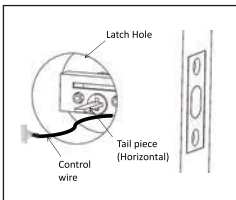


Figure 8c



**NOTE:** Tailpiece must be positioned horizontally

### 9. SECURING THE EXTERIOR ASSEMBLY TO THE DOOR

- From the side marked “This side against door”, route the Control Wire through the rectangular slot in the Mounting Plate (Figure 9a-f).
- Place Mounting Plate against door with tailpiece passing through the center hole in the three hole set (Figure 9a-f).
- Secure the Mounting Plate to the Exterior Assembly using two 1”(25.4mm) Screws (Figure 9a-f).
- Hand tighten with a Phillips Screwdriver leaving loosely connected (Figure 9a-f).
- Check if the Rubber Gasket is properly aligned and correct as necessary (Figure 9a-f).
- Check vertical alignment of the lock (Figure 9a-f).
- Tighten securely with a hand held Phillips Screwdriver. **DO NOT OVER TIGHTEN**

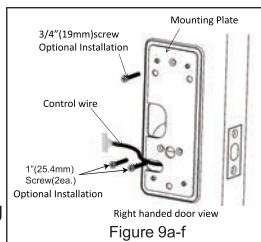


Figure 9a-f

### 10. OPTIONAL INSTALLATION

- Using a 1/16” (2mm) drill bit, drill a pilot hole in your door using the Mounting Plate upper hole as a guide (Figure 10a).
- Insert one 3/4” (19mm) screw and tighten.



**NOTE:** Lock and unlock using the key to see if the Deadbolt Latch is opening and closing easily.

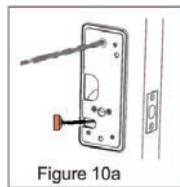
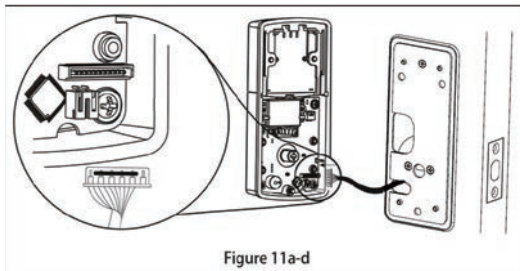


Figure 10a

## INSTALLING INTERIOR ASSEMBLY (CONT.)

### 11. ATTACH THE CONTROL WIRE TO THE INTERIOR ASSEMBLY

- Use care to attach the Control Wire male plug to the Interior Assembly female socket connector (Figure 11a-d).
- Do not force the Control Wire male plug into the Interior Assembly female socket connector (Figure 11a-d).
- The Control Wire male plug has two alignment tabs on the smooth side of the plug which is the top of the plug (Figure 11a-d).
- The Control Wire male plug is inserted with the smooth side up into the Interior Assembly female socket connector (Figure 11a-d).



### 12. ATTACH THE INTERIOR ASSEMBLY TO DOOR

- Position the Interior Assembly over the tailpiece and push the Interior Assembly against the door (Figure 12a).
- Using two 5/16" (8mm) screws and one 1" (25.4mm) screw, attach the Interior Assembly to the Mounting Plate. **DO NOT OVER TIGHTEN SCREWS** (Figure 12b).

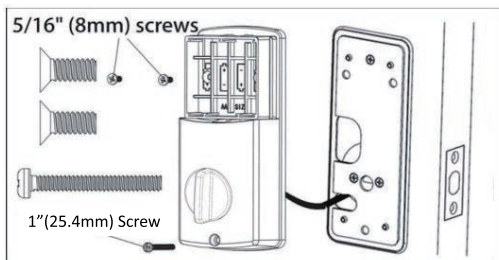


Figure 12a-b

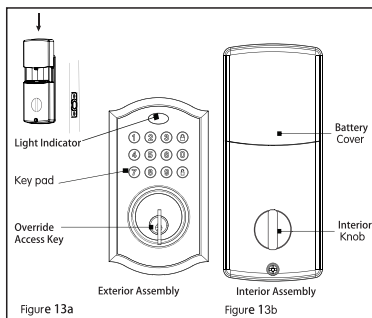


**NOTE:** Lock and unlock using Interior Knob to see if the latch is opening and closing easily.

## INSTALLING INTERIOR ASSEMBLY (CONT.)

### 13. Installing Batteries



- Insert 4 AA high quality Alkaline batteries into the Battery Compartment in the direction noted +/- on the Compartment. The Lock will beep 3 times, the keypad will illuminate white, and the Light indicator will flash green 3 to signify that it has received power (Figure 13a).
- Slide the Battery Cover down into the track on the Interior Assembly to cover the batteries (Figure 13b).



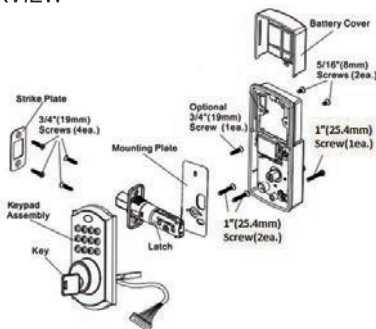
**NOTE:** Do not touch the Keypad until the white light turns off. Do not use rechargeable batteries or non-alkaline batteries.

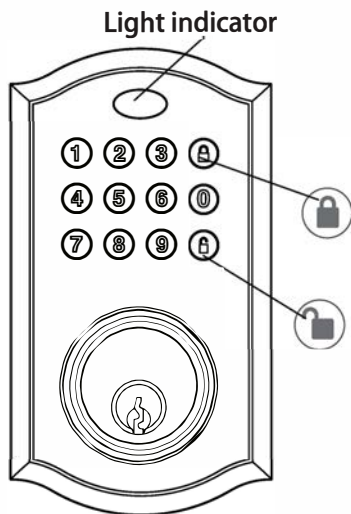
### 14. Testing Lock

With the Door Open

- Test the Lock using the Interior Knob. The bolt should move smoothly.
- Test the lock using the Keypad. To lock press  and then press “ 123456 ”  to unlock.

## INSTALLATION OVERVIEW





Light indicator

Green

- Indicates Successful Programming Step
  - Indicates Unlocking is Successful
- Red
- Indicates Failed Programming Step
  - Indicates Locking is Successful

### Lock button

Lock - Used to lock door

Clear - Used to clear wrong keypad entries

### Unlock button






Unlock - Used to unlock door

Programming - Used in programming steps

### Batteries (not included)




Electronic lock requires (4) High Quality AA Alkaline batteries. When all 4 batteries are installed in the correct position, hear 3 beeps and the keypad will illuminate white. DO NOT TOUCH the keypad until the keypad stops illuminating.

### Programming Symbols



-  Lock / Clear
-  Unlock / Programming
-  PC Programming Code
-  UC User Code (4-9 digits)
-  ID User ID (01-50, 2 digits)

### Factory Settings

The lock comes factory preset with a:

-  PC Programming code - 123456
-  UC User code - 123456
-  ID User ID - 01



Please change the Programming Code  and the User Code  as soon as possible after installation to insure security.

### Programming Tips


5 Seconds - Complete all the programming steps in the programming mode within 5 seconds.

Clear - Use the  key to clear entries in case a wrong button is pushed.



## Locking/Unlocking/User Code Management

### TO UNLOCK

Using Keypad: Enter a valid User Code (default code is 123456) and press  and hear 1 beep and green lights .

### TO LOCK



Using Keypad: Press  and then hear 2 beeps and red lights.



**Please keep the door OPEN and lock at the UNLOCK position before adjusting any programming setting.**

## Changing Programming Code

### CHANGE CURRENT OR PRESET PROGRAMING CODE

Factory default Programming Code  = 123456, this is the master password for your lock. All programming functions require this code. Follow the below sequence to change the Programming Code  to your custom 6 digit combination.






❖ Please keep the door OPEN and UNLOCK.

❖  →  → 4 →  → new  →  → Re-enter  → 

Hear 1 beep and Light Indicator illuminates green.

## Adding User Codes

### TO ADD A NEW USER CODE (you can add up to 50 new user codes)

The User Code  must be a 4-9 digit combination. Each User Code  is then linked to a User ID  (which is any number between 01-50) to identify an individual User Code . (User ID  1-9 should be entered as 01-09).

❖ Please keep the DOOR OPEN and UNLOCK.

❖  →  → 1 →  →  →  →  →  Re-enter  → 

Hear 1 beep and Light Indicator illuminates green.

**Note: When a NEW USER CODE is set, the default code (123456) is deleted for safety.**

## Auto-Lock Function/Sound On and Off

### DELETE ONE EXISTING OR PRESET USER CODE

The unit comes with a factory User ID **ID** = 01 for User Code **UC** = 123456.

**IMPORTANT:** To delete 1 User Code **UC**, the lock must have more than 1 User Code **UC** in its database.

❖ Please keep the DOOR OPEN and UNLOCK.

❖ **PC** →  → 2 →  → Existing **ID** →  re-enter **ID** → 

Hear 1 beep and Light IndiCatOr illUminates green.

### DELETE ALL USER CODES

**IMPORTANT:** this will delete the user codes but not the programming code, enter the following.

❖ Please keep the DOOR OPEN and UNLOCK

❖ **PC** →  → 3 →  → re-enter **PC** → 

Hear 1 beep and Light Indicator illuminates green.

## Automatic Lock Function

The Auto-Lock function automatically re-locks your door after a set time (**3-30 seconds**) after unlocking. This function is on (10 seconds). by default.

Set Auto Lock:




❖ Please keep the DOOR OPEN and UNLOCK

❖ **PC** →  → 5 →  → Time → 

Hear 1 beep and Light IndiCatOr illUminates green.

Cancel Auto Lock:

❖ Please keep the DOOR OPEN and UNLOCK

❖ **PC** →  → 5 →  → 00 → 

Hear 1 beep and Light Indicator illuminates green.

## Sound On and Off

You can “mute” or “unmute” your lock by entering the following (This feature is on by default :

❖ Please keep the door OPEN and UNLOCK.

❖ **PC** →  → 6 →  → 1 or 2 → 

1 = Sound Off

2 = Sound On

Sound Off (1)- Light Indicator illuminates green.




Sound On (2)- Hear 1 beep and Light Indicator illuminates green.

**Note:** If the lock is muted, you will not hear beeping during programming, normal operation, low battery indicators or system alerts.



Warning sounds and LED flashes red after 4 incorrect code attempts:  
Keypad shuts down for 180 seconds.

## Reset Factory Settings

Remove one battery for 10 seconds. Reinsert the battery and wait for a long and 3 short beep. Press  3 times within 3 seconds. The lock will beep and the light indicator will turn green. The lock will be default mode ,Programming Code  is 123456 and User Codes  is 123456.

## Low Battery Warning

Beeps and LED flashes red for 5 seconds. Replace with good quality alkaline batteries.  
Note: Removing batteries does not erase active Programming or User Codes.

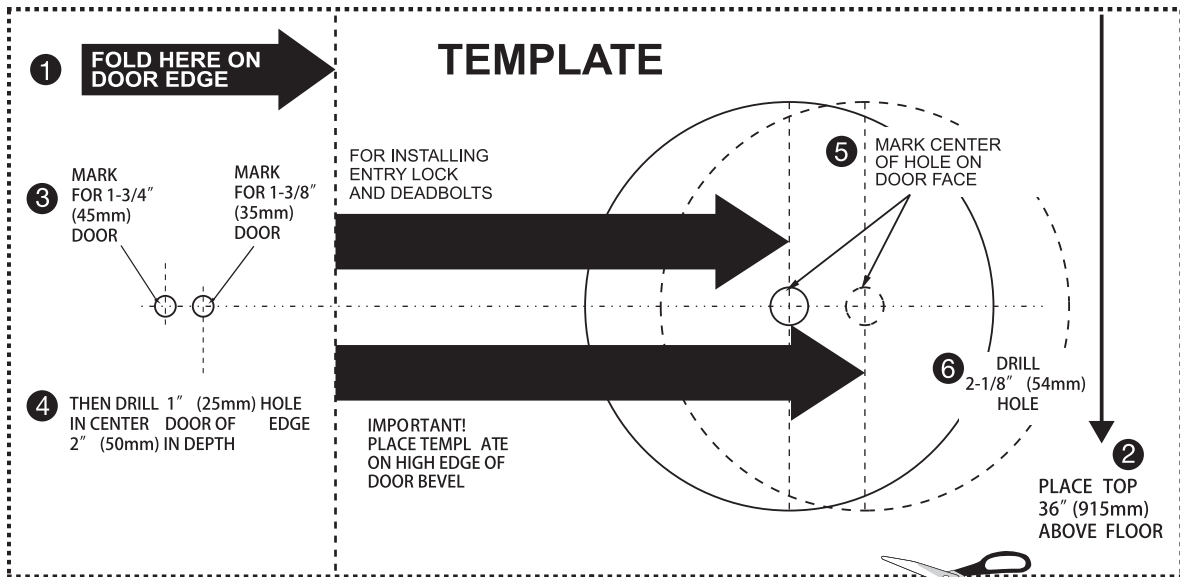
## Audio and Visual Message Guide

Unlock / Valid programming:	1 long beep and LED illuminates green
Lock:	2 short beeps and LED illuminates red
3 Incorrect code entry attempts:	3 long beeps and LED flashes red 3 times , system locked 180 seconds
Low Voltage:	6 beeps and LED flashes red 6 times
Super Low Voltage:	4 short beeps and LED flashes red 4 times
Invalid Programming:	1 short beeps and LED illuminates red
Power on:	1 long beep and 3 short beep and LED illuminates green
Chip Reset:	1 long beep and LED flash 1 green +3 short beeps LED flashes red 3 times
Lock Error:	3 long beeps LED flashes red 3 times
Repeat operation after Lock Error:	3 short beeps three times LED flashes red 3 times

NOTE: When battery is under low voltage, the lock will give the (Low Battery Warning: Beeps and LED flashes red for 5 seconds). During this time your lock can still work. However once the voltage is lower than 4.3V (called Super-Low Voltage), the operation of the locking and unlocking will not work, user must replace batteries immediately.



Issue	Solution
The lock is working in the opposite way	<p>Direction switch setting is incorrect. Remove the Interior Assembly and move the switch to the opposite direction.</p> <ul style="list-style-type: none"> <li>• Check that if your switch is set in the correct position for Left or Right Handed door.</li> </ul> <p><u>If Correct</u></p> <ul style="list-style-type: none"> <li>• Rotate Interior Knob and reinstall Interior Assembly. Retest again while holding Interior Assembly in place.</li> </ul>
Interior Knob will not turn.	Knob or horizontally tailpiece is installed in incorrect position. Remove Interior Assembly and reposition the Interior Knob. With the Deadbolt Latch retracted verify that the tailpiece is horizontally.
Lock will not function electronically.	<ul style="list-style-type: none"> <li>• Check that all batteries are fresh high quality Alkaline Batteries.</li> <li>• Check for proper polarity (+ -) of all batteries.</li> <li>• Check that the Control Wire is attached to the Interior Assembly.</li> </ul>
Lock gives error signal when opening or locking and Dead-bolt Latch will not extend or retract completely when door shuts.	Unlock door using Key or Interior Knob. While door is open, check that the Deadbolt Latch operates smoothly. Check for proper alignment of the strike plate, adjust as needed to assure there is no binding against the Deadbolt Latch.
Deadbolt Latch is sticking.	<p>Installation screws of the lock may be too tight and have to be loosened.</p> <ul style="list-style-type: none"> <li>• Remove Interior Assembly.</li> <li>• Slightly loosen the Mounting Plate screws.</li> <li>• Lock and unlock using the Key.</li> <li>• Reattach Control Wire and Interior Assembly.</li> </ul>





# BACK OF TEMPLATE



