



SMARTCODE 916

TOUCHSCREEN ELECTRONIC DEADBOLT

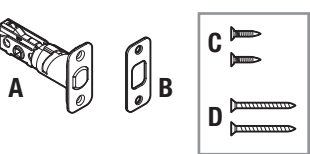
Installation Guide

Required Tools
Additional Tools (depending on application)

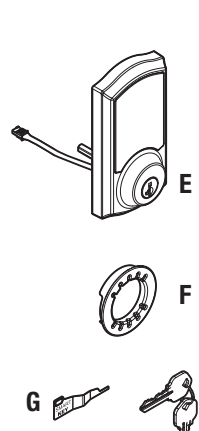
Use and programming instructions are located on the reverse side of this document.

Parts in the Box

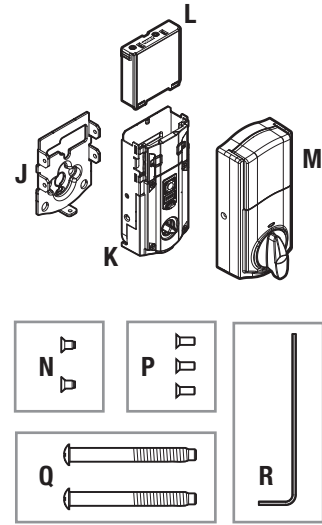
Latches and Strike



Exterior Assembly



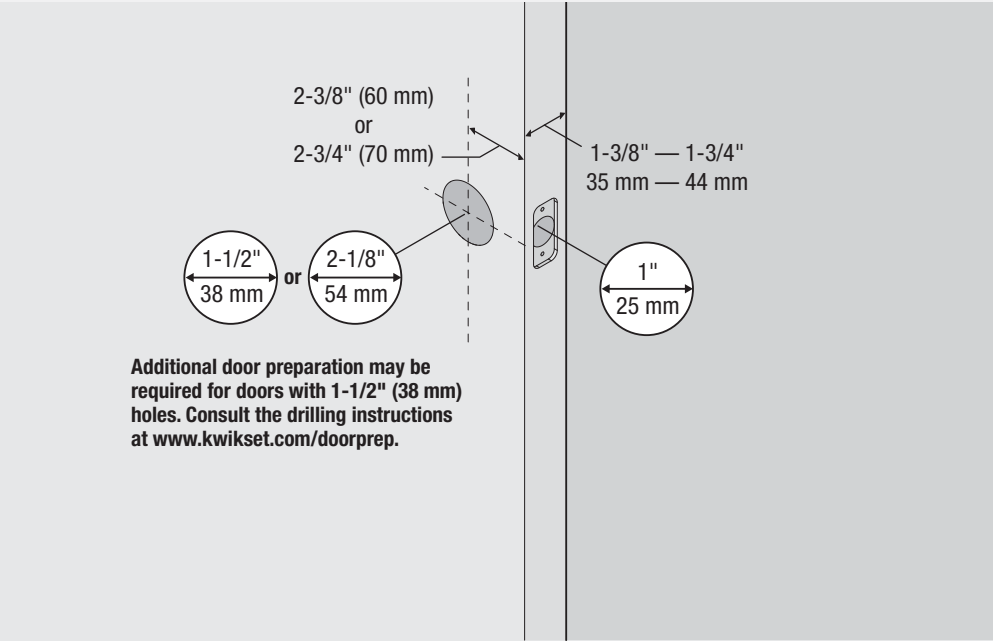
Interior Assembly



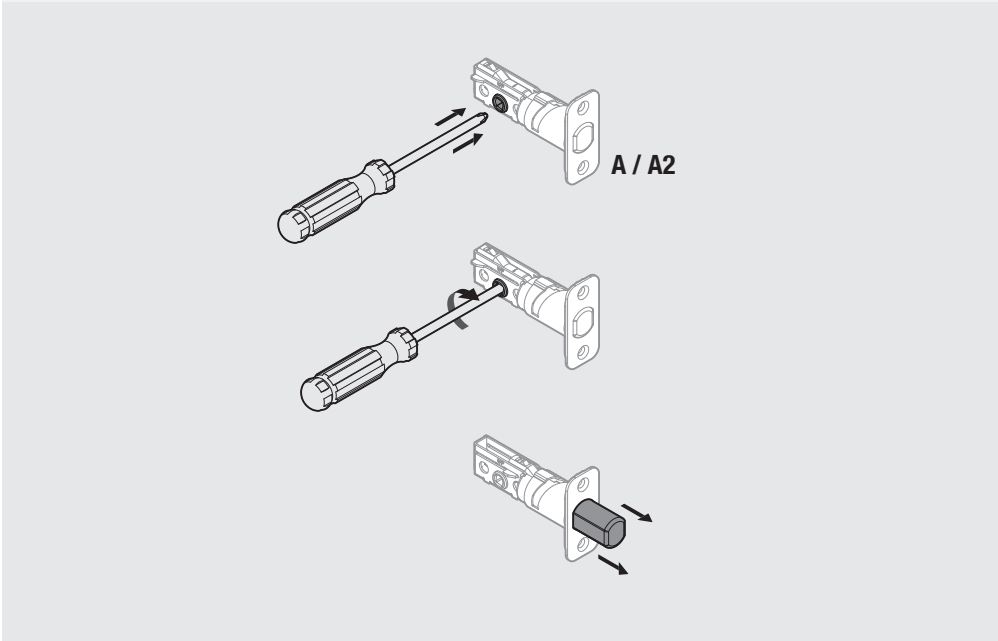
If needed, please contact Kwikset to order a drive-in latch for your lock.

Kwikset
1-866-863-6584
www.kwikset.com

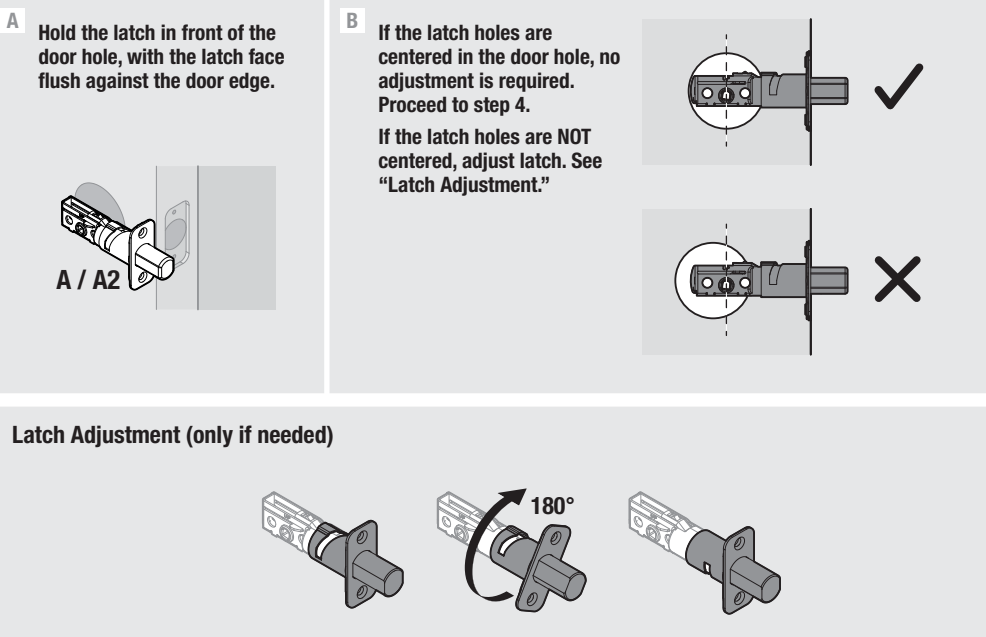
1 Check dimensions



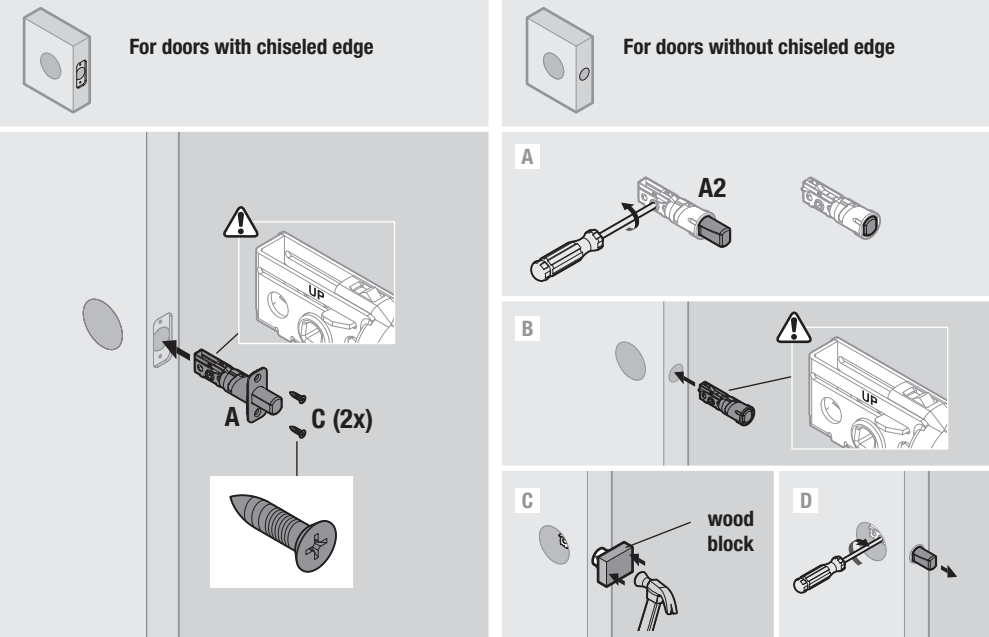
2 Extend latch bolt



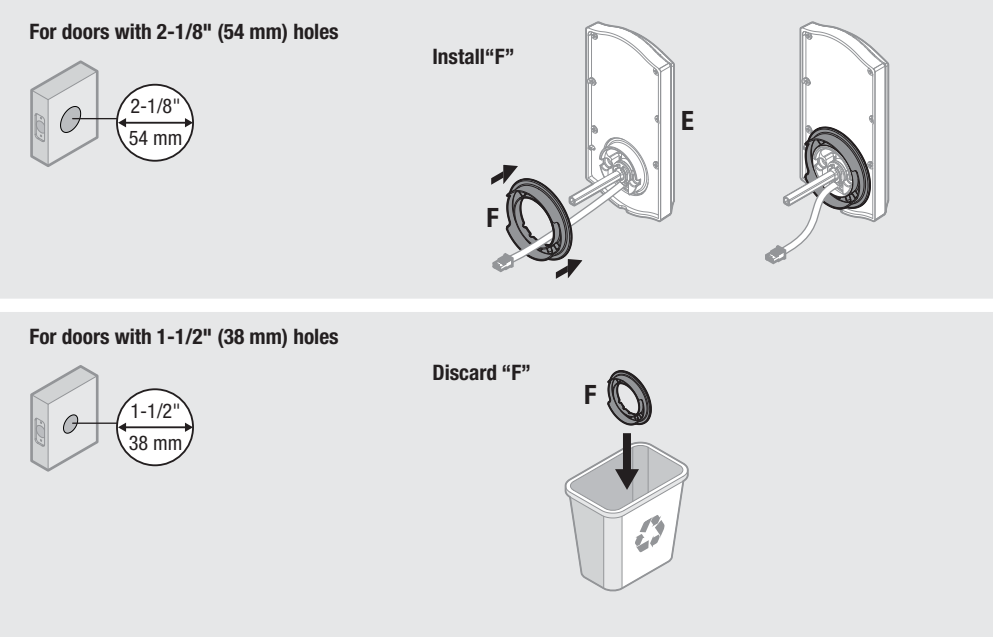
3 Adjust the backset of latch (if needed)



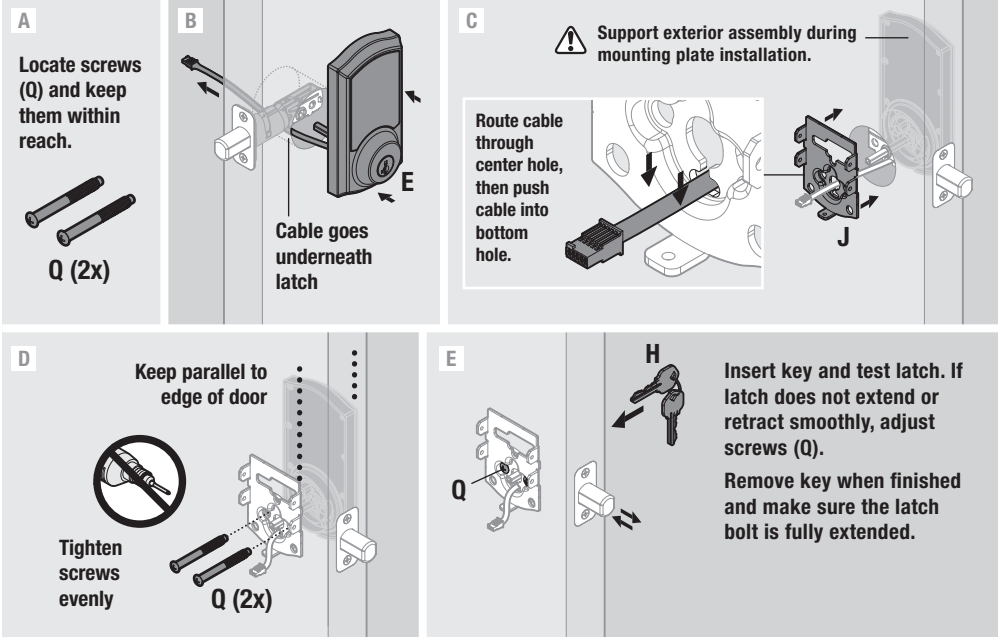
4 Install latch



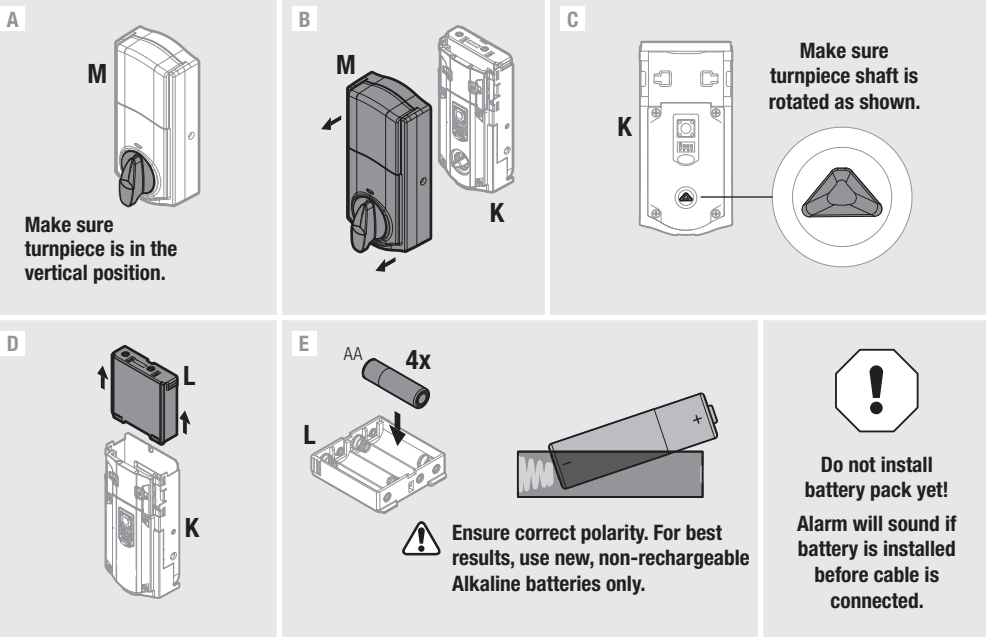
5 Prepare exterior keypad



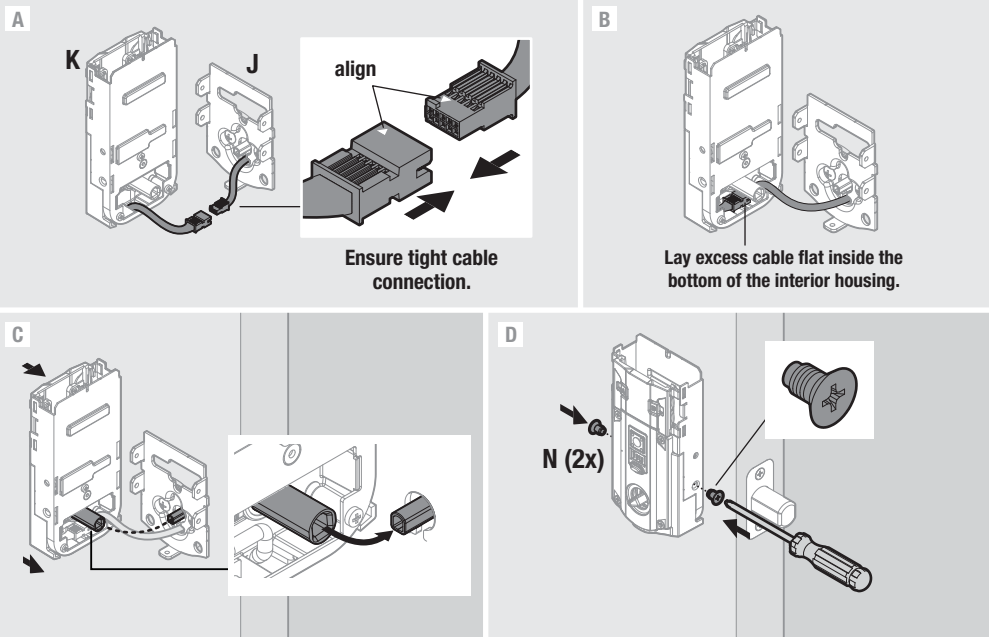
6 Install keypad and mounting plate



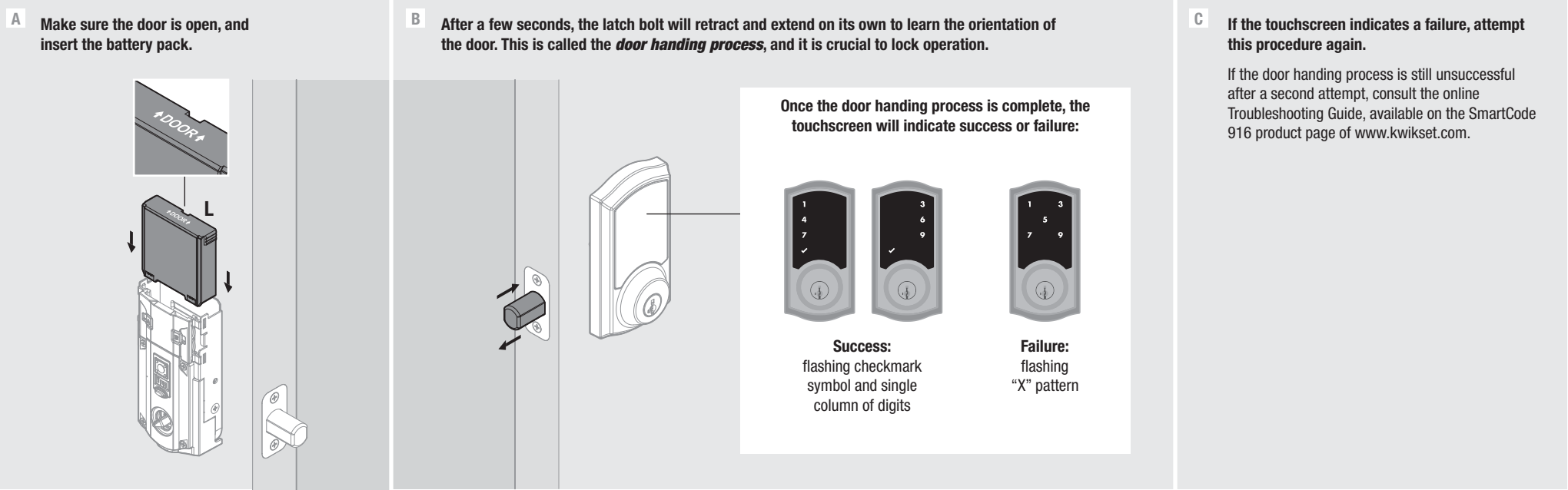
7 Disassemble interior assembly and load battery pack



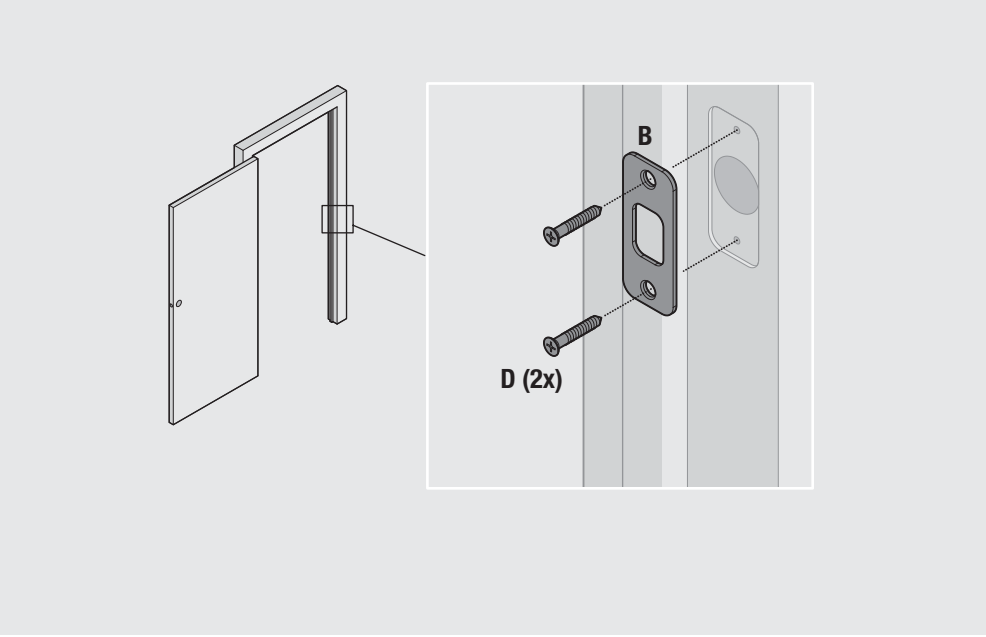
8 Install interior assembly



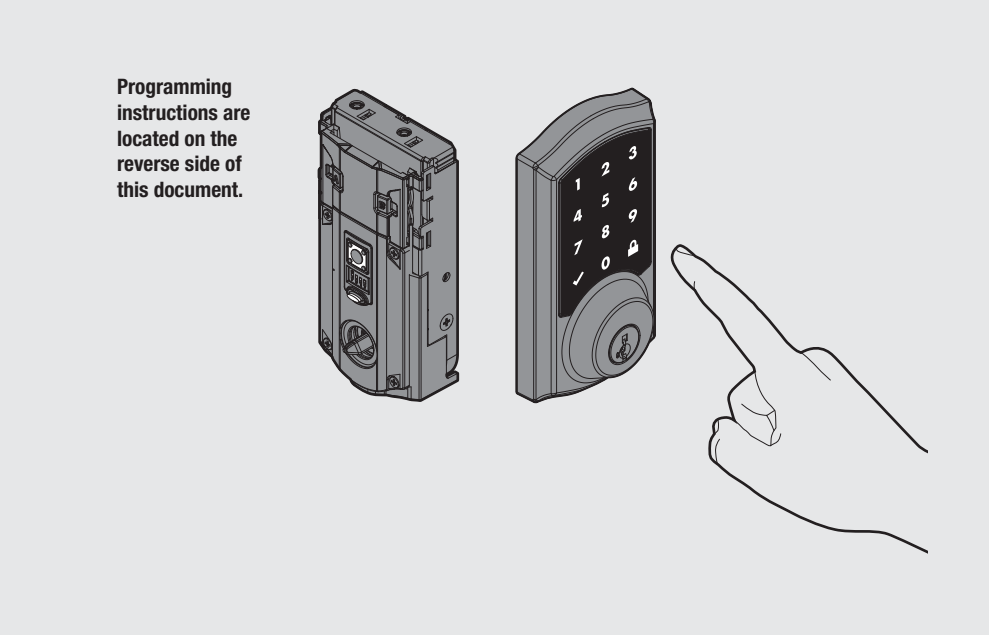
9 Install battery pack and perform door handing process



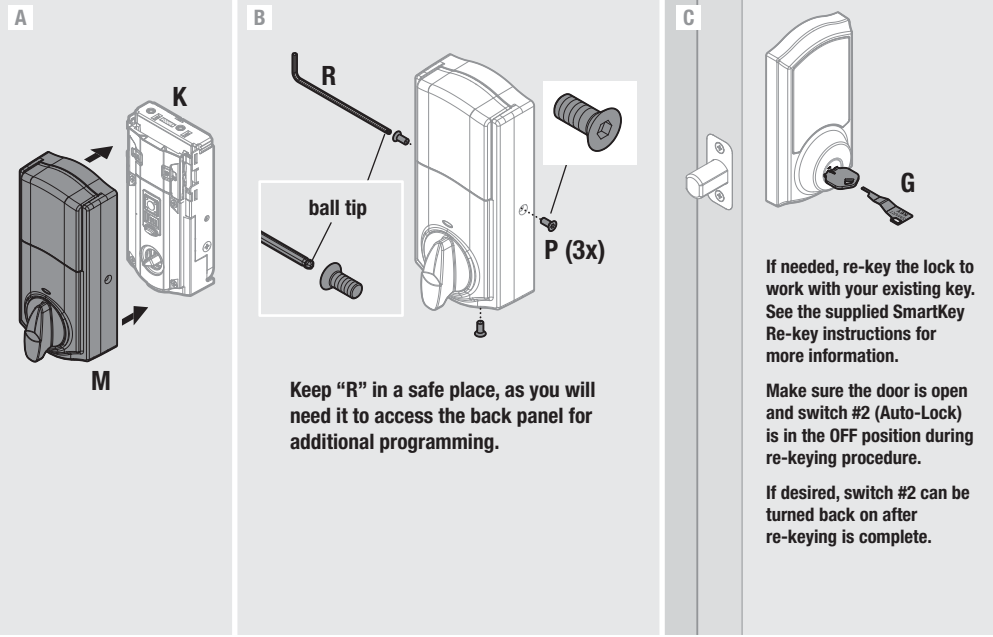
10 Install strike



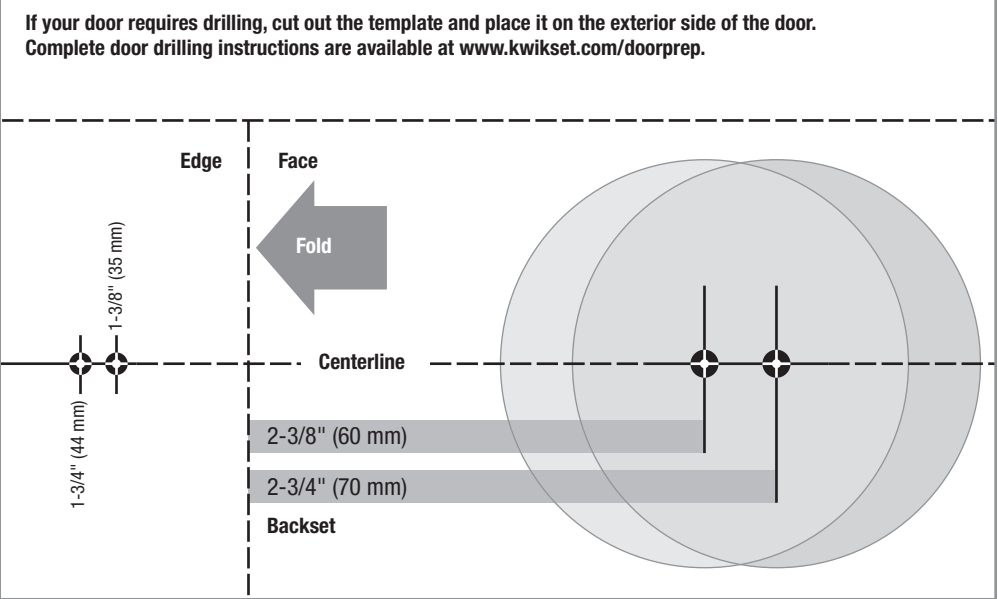
11 Program the lock



12 Install the battery cover and re-key the lock



Template





SMARTCODE 916

TOUCHSCREEN ELECTRONIC DEADBOLT

User Guide

Kwikset
1-866-863-6584
www.kwikset.com

Troubleshooting and FAQs are available on the SmartCode 916 product page online at www.kwikset.com.

Installation instructions are located on the reverse side of this document.

A**SmartCode at a Glance**

Exterior

Interior (cover removed)

Note: When the cover is removed, the turnpiece shaft can be used to manually lock and unlock the door.

B**Normal Operation**

Activating the Screen

Option 1
Touch screen with palm or back of hand until digits illuminate.

Option 2
Touch lower left area of screen (where checkmark is located) until digits illuminate.

Option 3
Touch screen with three or more fingers until digits illuminate.

Unlocking the Door

1 Activate the screen.

2 If SecureScreen™ is enabled, touch the random digits that appear.

3 Enter user code.

Locking the Door

1 Activate the screen.

2 Press Lock symbol.

Note: If no user codes are programmed, the door cannot be locked via touchscreen.

SecureScreen™

SecureScreen is an added-security feature that displays random digits before you enter a user code to unlock the door. This feature ensures that there are fingerprints on all digits so that codes cannot be identified by examining the touchscreen for fingerprints.

If desired, this feature can be disabled by turning switch #4 to the off position.

C**Z-Wave & ZigBee Systems**

Lock Inclusion

“Inclusion” refers to the process in which the lock is added to a Z-Wave or ZigBee controller.

Initiate the Inclusion process at your ZigBee or Z-Wave controller. Refer to your control system instructions for more information.

Inclusion Troubleshooting

If Inclusion is unsuccessful, perform the Exclusion process. Then repeat the Inclusion process. If Inclusion is still unsuccessful, consult the online Troubleshooting Guide, available on the SmartCode 916 page of www.kwikset.com.

Lock Exclusion

“Exclusion” refers to the process in which the lock is removed from a Z-Wave or ZigBee controller. Initiate the Exclusion process at your Z-Wave or ZigBee controller. Refer to your control system instructions for more information.

System Notes

Z-Wave

In order to fully utilize this product, you must have a Z-Wave controller compatible with door locks. Z-Wave is a “Wireless mesh network,” and results may vary based on building construction and communication path, with 35+ feet being typical installed distance in a standard home environment and 250 feet+ when the lock has a clear line of sight with the network controller. It may be necessary to install additional Z-Wave beaming capable devices that can serve as repeaters to enhance the communication path between the lock and controller for a more robust Z-Wave network.

ZigBee

ZigBee is a “Wireless mesh network,” and results may vary based on building construction and communication path, with 35+ feet being typical installed distance in a standard home environment and 250 feet+ when the lock has a clear line of sight with the network controller. It may be necessary to install additional ZigBee devices to enhance the communication path between the lock and controller for a more robust ZigBee network.

System	Inclusion	Exclusion
Z-Wave	Press button “A” once.	Press button “A” once.
ZigBee	Press button “A” four times.	Press button “B” nine times.

D**Programming Codes**

a**Programming Information**

It is recommended that you add and delete all user codes through your Z-Wave or ZigBee control system. If your system does not allow this, the following sections will provide instructions for how to add and delete codes at the lock.

User Codes Requirements

Each user code must be a unique code between 4 and 8 digits, depending on your control system. A total of 30 user codes may be programmed.

Programming Behavior

Successful Programming

The Checkmark symbol will illuminate and you will hear one beep*.

Unsuccessful Programming

The “X” pattern will flash three times, and you will hear three beeps*.

Programming Timeout

If the screen is not pressed for 20 seconds, the system will time out, and you will need to restart the procedure.

b**Enabling and Adding a Mastercode (Optional for Enhanced Security)**

User codes can be programmed with or without a mastercode. Using a mastercode is an optional, added-security measure. It is not enabled by default. A mastercode is used to add and delete user codes, but it cannot unlock the door (unless the same code is programmed as a user code, though this is not recommended). The mastercode must be 4-8 digits.

1 Keep door open. Press and HOLD Program button until Checkmark symbol illuminates (about 5 seconds).

2 Press Checkmark symbol once.

3 Enter new mastercode.

4 Press Lock symbol once.

5 Re-enter mastercode.

6 Press Lock symbol once.

IF UNSUCCESSFUL

Make sure the mastercode has not been programmed already. Attempt this procedure again, making sure to enter the same new mastercode in steps 3 and 5.

TEST

Make sure switch #3 is on, and then press the Program button once. If you immediately hear five beeps and see the Checkmark flash five times, the mastercode is enabled.

If the screen is not pressed for 20 seconds, the system will time out, and you will need to restart the procedure.

c**Disabling and Deleting the Mastercode**

1 Keep door open. Press and HOLD Program button until Checkmark symbol illuminates (about 5 seconds).

2 Press Checkmark symbol once.

3 Press Lock symbol once.

4 Enter mastercode.

5 Press Lock symbol once.

6 Re-enter mastercode.

7 Press Lock symbol once.

IF UNSUCCESSFUL

Make sure the mastercode has been enabled before trying to disable it. Attempt this procedure again, making sure to enter the same mastercode in steps 4 and 6.

TEST

Make sure switch #3 is on, and then press the Program button once. If you don't immediately hear five beeps and see the Checkmark flash five times, the mastercode is disabled.

If the screen is not pressed for 20 seconds, the system will time out, and you will need to restart the procedure.

d**Adding User Codes**

Mastercode NOT enabled:

1 Keep door open. Press Program button once.

Press Program button once.

2 Press Checkmark symbol once.

3 Enter new USER code.

4 Press Lock button once.

IF UNSUCCESSFUL

Make sure the user code not a duplicate and that it is between 4 and 8 digits during your next attempt.

TEST CODE

While the door is open and locked, test the user code to make sure it unlocks the door.

Mastercode enabled:

1 Keep door open. Press Program button once.

You will hear five beeps and the checkmark will flash five times.

2 Press Checkmark symbol once.

3 Enter MASTERCODE (the code that was enabled in section b)

4 Press Lock symbol once.

5 Enter new USER code.

6 Press Lock symbol once.

IF UNSUCCESSFUL

Make sure the user code not a duplicate and that it is between 4 and 8 digits during your next attempt.

TEST CODE

While the door is open and locked, test the user code to make sure it unlocks the door.

If the screen is not pressed for 20 seconds, the system will time out, and you will need to restart the procedure.

e**Deleting a Single User Code**

Mastercode NOT enabled:

1 Keep door open. Press Program button once.

Press Program button once.

2 Press Checkmark symbol once.

3 Press Lock symbol once.

4 Enter USER code.

5 Press Lock symbol once.

6 Re-enter USER code.

7 Press Lock symbol once.

IF UNSUCCESSFUL

Make sure to enter the same valid code in steps 4 and 6.

TEST CODE

While the door is open and locked, test the user code to make sure it no longer unlocks the door.

Mastercode enabled:

1 Keep door open. Press Program button once.

You will hear five beeps and the checkmark will flash five times.

2 Press Checkmark symbol once.

3 Press Lock symbol once.

4 Enter MASTERCODE (the code that was enabled in section b)

5 Press Lock symbol once.

6 Enter USER code.

7 Press Lock symbol once.

IF UNSUCCESSFUL

Make sure to enter the same valid code in steps 6 and 8. Make sure to enter a valid mastercode in step 4.

TEST CODE

While the door is open and locked, test the user code to make sure it no longer unlocks the door.

If the screen is not pressed for 20 seconds, the system will time out, and you will need to restart the procedure.

f**Deleting All User Codes**

This procedure can only be performed if the mastercode is enabled. Note: The Auto-Lock feature (switch #2) will be disabled if all codes are deleted.

1 Keep door open. Press Program button once.

You will hear five beeps and the checkmark will flash five times.

2 Press Checkmark symbol once.

3 Press Lock symbol once.

4 Enter MASTERCODE (the code that was enabled in section b)

5 Press Lock symbol once.

6 Press “9” six times.

7 Press Lock symbol once.

8 Press “9” six times.

9 Press Lock symbol once.

IF UNSUCCESSFUL

Make sure to enter a valid mastercode in step 4 during your next attempt.

TEST CODE

While the door is open and unlocked, press the Lock symbol. If the latch bolt does not extend to lock, then all codes have been successfully deleted.

If the screen is not pressed for 20 seconds, the system will time out, and you will need to restart the procedure.

E**Regulatory Compliance**

This product complies with standards established by the following regulatory bodies:

- Federal Communications Commission (FCC)
- Industry Canada

FCC

This device complies with Part 15 of the FCC Rules. Operation is subject to the following two conditions:

- (1) This device may not cause harmful interference, and
- (2) This device must accept any interference received, including interference that may cause undesired operation.

This equipment has been tested and found to comply with the limits for a Class B digital device, pursuant to Part 15 of the FCC Rules. These limits are designed to provide reasonable protection against harmful interference in a residential installation. This equipment generates, uses, and can radiate radio frequency energy and, if not installed and used in accordance with the instructions, may cause harmful interference to radio communications. However, there is no guarantee that interference will not occur in a particular installation. If this equipment

does cause harmful interference to radio or television reception, which can be determined by turning the equipment off and on, the user is encouraged to try to correct the interference by one or more of the following measures:

- Reorient or relocate the receiving antenna.
- Increase the separation between the equipment and receiver.
- Connect the equipment into an outlet on a circuit different from that to which the receiver is connected.
- Consult the dealer or an experienced radio/TV technician for help.

IMPORTANT! Changes or modifications not expressly approved by the manufacturer could void the user's authority to operate the equipment.

Industry Canada

This device complies with Industry Canada licence-exempt RSS standard(s). Operation is subject to the following two conditions: (1) this device must not cause interference, and (2) this device must accept any interference, including interference that may cause undesired operation of the device.

F**Switches, Status LED Colors, and System Alerts**

Switches

Switch	Function
1	Door lock status LED blinks every 6 seconds
2	Lock automatically re-locks door 30 seconds after unlocking. Disabled if no codes are programmed.
3	Audio
4	SecureScreen feature displays random digits to be pressed before entering user code. This added-security feature ensures that there are fingerprints on all digits so that codes cannot be identified by examining the touchscreen for fingerprints.

Status LED

Color	Lock Status
Blinking green	Unlocked
Blinking amber	Locked
Blinking Red	Low battery

G**Manual Door Handling**

If needed, the door handing process can be initiated manually. This is useful if the lock is being moved to a different door.

1 Remove battery pack.

2 Press and HOLD the Program button while reinserting the battery pack. Release button once battery pack is installed. The status LED will flash red and green.

3 Press the Program button once more.

4 The latch bolt will extend and retract to learn the orientation of the door.

Success

Failure

If the touchscreen indicates a failure, see the online Troubleshooting guide.

H**Factory Reset**

A factory reset will delete all codes associated with the lock.

1 Remove battery pack.

2 Press and HOLD the Program button while reinserting the battery pack. Keep holding the button for 30 seconds until the lock beeps and the status LED flashes red.

3 Press the Program button once more. The status LED will flash green and red several times.

4 After a few seconds, the lock will initiate the door handing process, and the latch bolt will extend and retract to learn the orientation of the door.

5 Perform the Inclusion process again to add the lock back into your network and controller.

I**Important Safeguards**

- Read all instructions in their entirety.
- Familiarize yourself with all warning and caution statements.
- Remind all family members of safety precautions.
- Restrict access to your lock's back panel and routinely check your settings to ensure they have not been altered without your knowledge.
- Protect your user codes and mastercode.
- Dispose of used batteries according to local laws and regulations.
- For added security, turn on switch #4.

CAUTION: Prevent unauthorized entry. Since anyone with access to the back panel can change the user codes, you must restrict access to the back panel and routinely check the user codes to ensure they have not been altered without your knowledge. The use of a mastercode can help protect your system's settings.

WARNING: This Manufacturer advises that no lock can provide complete security by itself. This lock may be defeated by forcible or technical means, or evaded by entry elsewhere on the property. No lock can substitute for caution, awareness of your environment, and common sense. Builder's hardware is available in multiple performance grades to suit the application. In order to enhance security and reduce risk, you should consult a qualified locksmith or other security professional.

©2014 Kwikset Corporation