

SMARTCODE 910

TOUCHPAD ELECTRONIC DEADBOLT

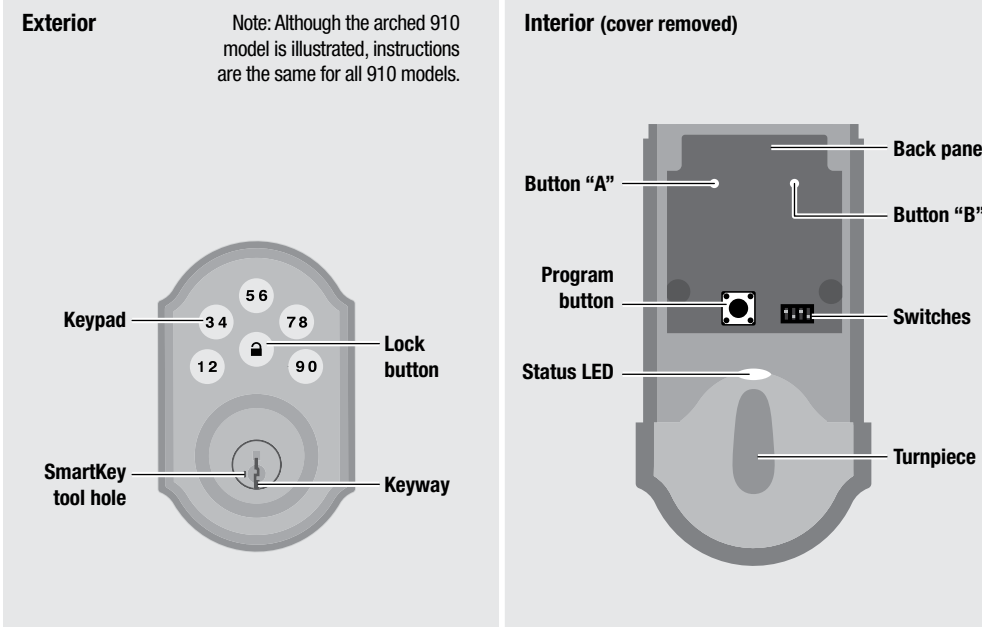
User Guide

Kwikset
1-866-863-6584
www.kwikset.com

Troubleshooting and FAQs are available online at www.kwikset.com.

Installation instructions are located on the reverse side of this document.

A SmartCode at a Glance



B Normal Operation

Unlocking the Door

Enter user code.

Tip: You can press the Lock button before entering your user code to light up the keypad at night.

Locking the Door

Press Lock button once.

If no user codes are programmed, the Lock button will be disabled.

Incorrect Codes

Codes Entered	Lock Behavior	Next Step
One incorrect code entered.	Keypad flashes red three times with three beeps*	Re-enter code.
Three incorrect codes entered within one minute.	Keypad flashes red 15 times with 15 beeps*	Re-enter code after 60 second keypad lockout.

*If switch #3 is ON

C Z-Wave & ZigBee Systems

Lock Inclusion

"Inclusion" refers to the process in which the lock is added to a Z-Wave or ZigBee controller.

Z-Wave: Perform the Inclusion process during lock installation. See step 8 in the Installation Guide.

ZigBee: Initiate the Inclusion process at your ZigBee controller. Refer to your control system instructions for more information.

Unsuccessful ZigBee Inclusion: Press button "B" nine times. Repeat the inclusion process.

Lock Exclusion

"Exclusion" refers to the process in which the lock is removed from a Z-Wave or ZigBee controller. Initiate the Exclusion process at your Z-Wave or ZigBee controller. Refer to your control system instructions for more information.

System Notes

Z-Wave
In order to fully utilize this product, you must have a Z-Wave controller compatible with door locks. Z-Wave is a "wireless mesh network," and results may vary based on building construction and communication path, with 35 feet+ being typical installed distance in a standard home environment and 250 feet+ when the lock has a clear line of sight with the distance from network controller. It may be necessary to install additional Z-Wave beaming capable devices that can serve as repeaters to enhance the communication path between the lock and controller for a more robust Z-Wave network.

ZigBee
ZigBee is a "Wireless mesh network," and results may vary based on building construction and communication path, with 35+ feet being typical installed distance in a standard home environment and 250 feet+ when the lock has a clear line of sight with the network controller. It may be necessary to install additional ZigBee devices to enhance the communication path between the lock and controller for a more robust ZigBee network.

Use the chart to determine which button to press during Inclusion and Exclusion.

System	Inclusion	Exclusion
Z-Wave	Press button "A" once.	Press button "A" once.
ZigBee	Press button "A" four times.	Press button "B" nine times.

D Programming Codes

a Programming Information

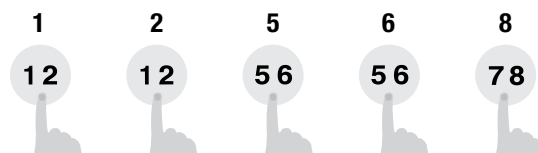
It is recommended that you add and delete all user codes through your Z-Wave or ZigBee control system. If your system does not allow this, the sections below will provide instructions for how to add and delete codes at the lock.

User Codes Requirements

Each user code must be a unique code between 4 and 8 digits, depending on your control system. A total of 30 user codes may be programmed.

How the Keypad Works

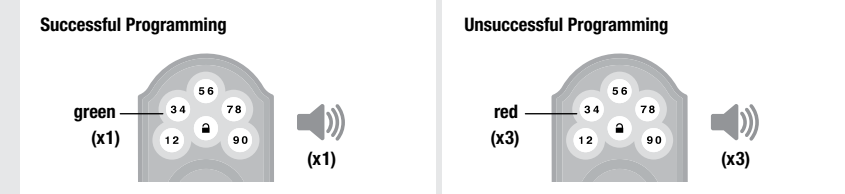
Each button represents two numbers (i.e. 1 and 2 for the first button). You only need to push the button once to get either 1 or 2. For example: If your code is 1-2-5-6-8,



Programming Behavior

Successful Programming
The keypad will flash green once, and you will hear one beep*.

Unsuccessful Programming
The keypad will flash red three times, and you will hear three beeps*.



Timeout
If no button is pressed for five seconds, the system will time out and you will need to restart the procedure.

	Timeout Behavior	
	Switch #3 ON	Switch #3 OFF
Mastercode enabled	red (x6)	red (x6)
Mastercode NOT enabled	(x2)	red (x3)

*If switch #3 is ON

b Enabling and Adding a Mastercode (Optional for Enhanced Security)

User codes can be programmed with or without a mastercode. Using a mastercode is an optional, added-security measure. It is not enabled by default. A mastercode is used to add and delete user codes, but it cannot unlock the door (unless the same code is programmed as a user code, though this is not recommended). The mastercode must be 4-8 digits.

- Press and HOLD Program button until keypad flashes green (about 5 seconds).
- Enter new mastercode.
- Press Lock button once.
- Re-enter mastercode.
- Press Lock button once.

IF UNSUCCESSFUL

Make sure the mastercode has not been programmed already. Attempt this procedure again, making sure to enter the same new mastercode in steps 2 and 4.

TEST

Make sure switch #3 is on, and then press the Program button once. If you hear three beeps and see the keypad flash green three times, the mastercode is enabled.
Note: The lock will time out after five seconds.

If no button is pressed for five seconds, the system will time out, and you will need to restart the procedure.

c Adding User Codes

Mastercode NOT enabled:

- Press the Program button the number of times that corresponds to the user code position being programmed.
Example: If programming the third code, press the button three times.
- Enter new USER code.
- Press Lock button once.

IF UNSUCCESSFUL

Make sure the user code is not a duplicate and that it is between 4 and 8 digits during your next attempt.

TEST CODE

While the door is open, test the user code to make sure it unlocks the door.

Mastercode enabled:

- Press Program button once.
The keypad will flash green and you will hear three beeps.
- Enter MASTERCODE (the code that was enabled in section b).
- Press Lock button once.
- Press the Program button the number of times that corresponds to the user code position being programmed.
Example: If programming the third code, press the button three times.
- Enter new USER code.
- Press Lock button once.

IF UNSUCCESSFUL

Make sure the user code is not a duplicate and that it is between 4 and 8 digits during your next attempt.
Make sure to enter a valid mastercode in step 2.

TEST CODE

While the door is open, test the user code to make sure it unlocks the door.

If no button is pressed for five seconds, the system will time out, and you will need to restart the procedure.

d Deleting User Codes

In order to delete a user code, you must override the code by adding a different user code in the same position. For example, if you want to delete the third code, add a different user code in position three.

TEST

Test the old user code to make sure it is inactive.

If you cannot remember the user code position, you may wish to perform a factory reset to delete all codes associated with the lock. See section "H."

e Disabling and Deleting the Mastercode

- Press and HOLD Program button until keypad flashes green (about 5 seconds).
- Press Lock button once.
- Enter mastercode.
- Press Lock button once.
- Re-enter mastercode.
- Press Lock button once.

IF UNSUCCESSFUL

Make sure the mastercode has been enabled before trying to disable it. Attempt this procedure again, making sure to enter the same mastercode in steps 3 and 5.

TEST

Make sure switch #3 is on, and then press the Program button once. If you don't immediately hear three beeps or see the keypad flash green three times, the mastercode is disabled.
Note: The lock will time out after five seconds.

If no button is pressed for five seconds, the system will time out, and you will need to restart the procedure.

E Regulatory Compliance

This product complies with standards established by the following regulatory bodies:

- Federal Communications Commission (FCC)
- Industry Canada

FCC
This device complies with Part 15 of the FCC Rules. Operation is subject to the following two conditions:
(1) this device may not cause harmful interference, and
(2) this device must accept any interference received, including interference that may cause undesired operation.

This equipment has been tested and found to comply with the limits for a Class B digital device, pursuant to Part 15 of the FCC Rules. These limits are designed to provide reasonable protection against harmful interference in a residential installation. This equipment generates, uses, and can radiate radio frequency energy and, if not installed and used in accordance with the instructions, may cause harmful interference to radio communications. However, there is no guarantee that interference will not occur in a particular installation. If this

equipment does cause harmful interference to radio or television reception, which can be determined by turning the equipment off and on, the user is encouraged to try to correct the interference by one or more of the following measures:

- Reorient or relocate the receiving antenna.
- Increase the separation between the equipment and receiver.
- Connect the equipment into an outlet on a circuit different from that to which the receiver is connected.
- Consult the dealer or an experienced radio/TV technician for help.

IMPORTANT! Changes or modifications not expressly approved by the manufacturer could void the user's authority to operate the equipment.

Industry Canada
This device complies with Industry Canada licence-exempt RSS standard(s). Operation is subject to the following two conditions: (1) this device may not cause interference, and (2) this device must accept any interference, including interference that may cause undesired operation of the device.

F Switches, Status LED Colors and Keypad Warnings

Switches

Status LED

Keypad

Switch	Function
1	Door lock status LED blinks every 6 seconds
2	Lock automatically re-locks door 30 seconds after unlocking. Disabled if no codes are programmed.
3	Audio
4	Not used

Color	Lock Status
Blinking green	Unlocked
Blinking amber	Locked
Blinking Red	Low battery
Solid Red	Door Handing Process did not work properly. See online Troubleshooting guide.

Warning	Reason	Solution
	Low battery	Replace batteries
Keypad flashes red with fast beeping sound* for 3-4 seconds.	Door jammed while attempting to lock	Relock door. If needed, reposition strike.
	No user code programmed	Program at least one user code

*If switch #3 is ON

G Troubleshooting

Problem: The latch bolt is not moving in the correct direction and the turnpiece will not rotate.

Reason: The door handing process was not executed during installation, and the lock does not know the orientation of the door.

Solution: Perform the door handing process, step 10 in the installation guide.

For more troubleshooting, download the online Troubleshooting Guide, available at www.kwikset.com.

H Factory Reset

A factory reset will delete all codes associated with the lock.

- Remove battery pack.
- Press and HOLD the Program button while reinserting the battery pack.
Keep holding the button for 30 seconds until the lock beeps and the status LED flashes red.
- Press the Program button once more. When the LED flashes green and you hear one beep, the lock has been reset.
- Perform the door handing process again. See step 10 in the Installation Guide, on the reverse side of this document.
- Perform the inclusion process again to add the lock back into your network and controller.

I Important Safeguards

- Read all instructions in their entirety.
 - Familiarize yourself with all warning and caution statements.
 - Remind all family members of safety precautions.
 - Restrict access to your lock's back panel and routinely check your settings to ensure they have not been altered without your knowledge.
 - Protect your user codes and mastercode.
 - Dispose of used batteries according to local laws and regulations.
- CAUTION:** Prevent unauthorized entry. Since anyone with access to the back panel can change the user codes, you must restrict access to the back panel and routinely check the user codes to ensure they have not been altered without your knowledge. The use of a mastercode can help protect your system's settings.
- WARNING:** This Manufacturer advises that no lock can provide complete security by itself. This lock may be defeated by forcible or technical means, or evaded by entry elsewhere on the property. No lock can substitute for caution, awareness of your environment, and common sense. Builder's hardware is available in multiple performance grades to suit the application. In order to enhance security and reduce risk, you should consult a qualified locksmith or other security professional.