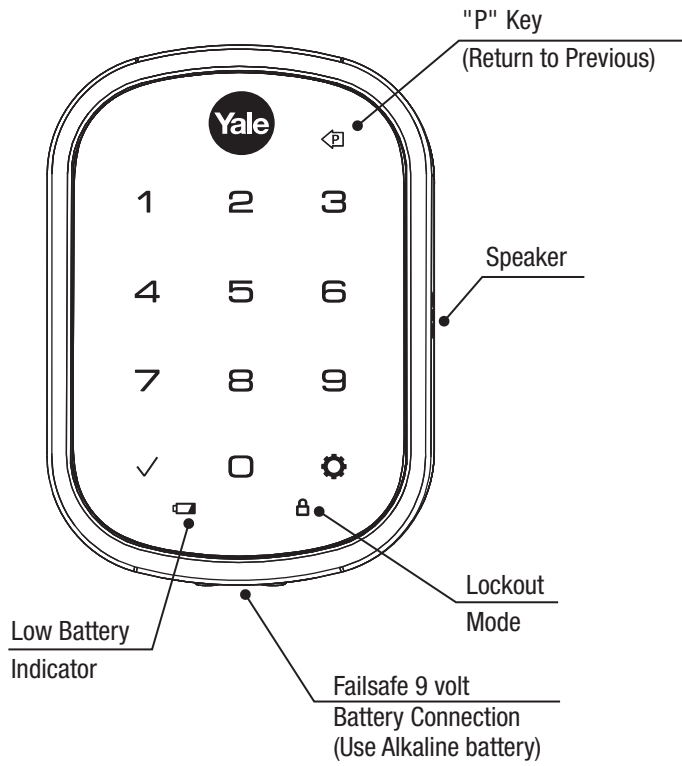
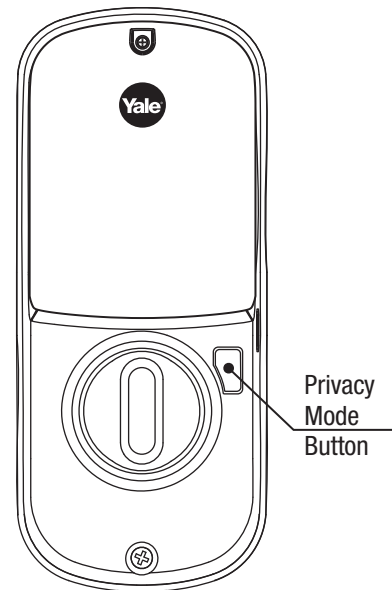


# Programming Instructions

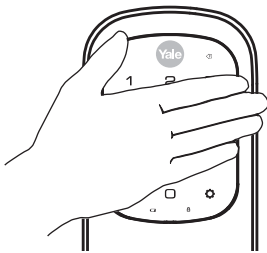
## Exterior Escutcheon



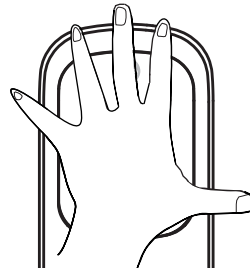
## Interior Escutcheon



## Lock Activation



**OR**

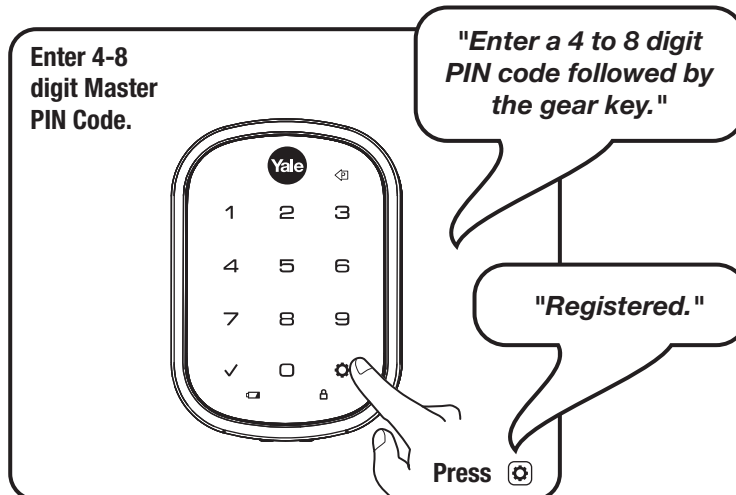
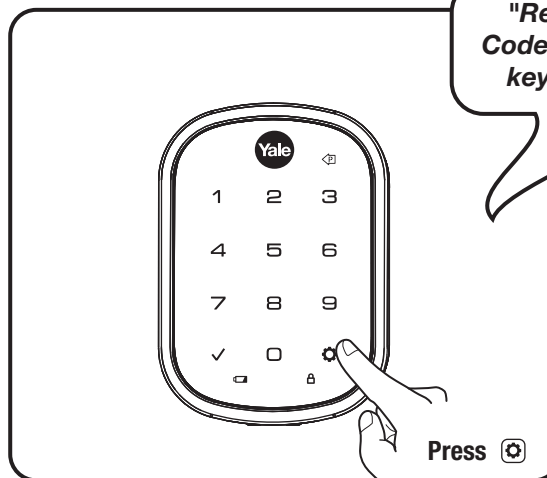


Master PIN Code must be created before any further programming.  
Max User Codes = 250 with Z-Wave Plus or ZigBee network module  
Max User Codes = 25 without network module or with iM1 network module  
Max User Codes - 12 with Bluetooth

# 1

## Creating Master PIN Code

Creating a Master PIN Code must be performed upon installation or after resetting the lock to factory default. Programming and use of lock is not possible until this step has been successfully completed.



# 2

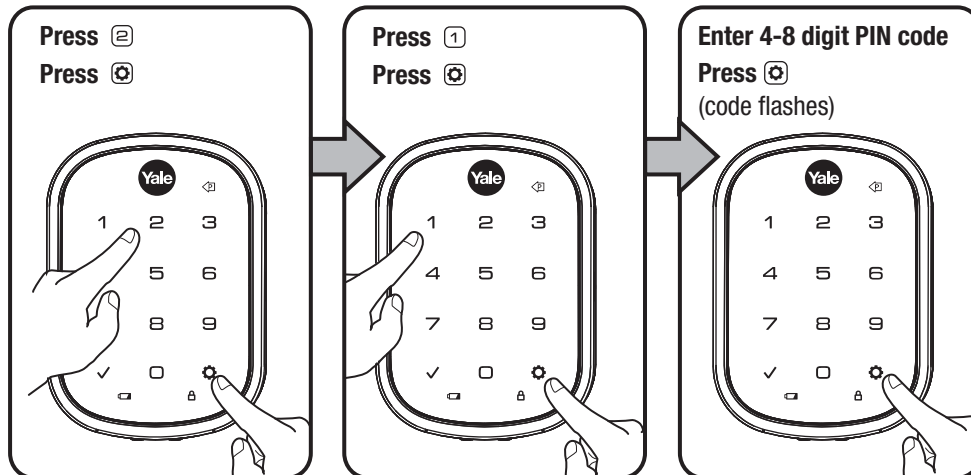
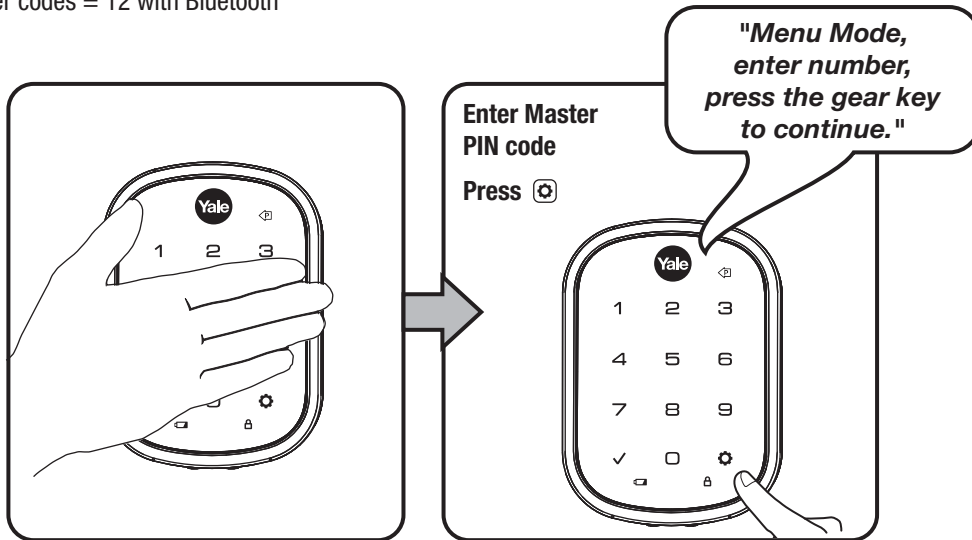
## Creating User PIN Codes

Master PIN code must be created first.

\*Max user codes = 250 with Z-Wave Plus or ZigBee network module

Max user codes = 25 without network module or with iM1 network module

Max user codes = 12 with Bluetooth



**Adding more \*User Codes:**

**To end programming:**

